

TWIN HEAD HORIZONTAL BAND RESAW

PARTS MANUAL



CONTENTS

GENERAL INFORMATION	3
FRAME ASSEMBLY	4
AIR/ OIL PRESSURE ASSEMBLY	6
PRESSURE REGULATOR ASSEMBLY	7
BOTTOM LEFT UP/DOWN ASSEMBLY	8
TOP LEFT UP/DOWN ASSEMBLY	10
TOP RIGHT UP/DOWN ASSEMBLY	12
BOTTOM RIGHT UP/DOWN ASSEMBLY	13
BOTTOM LEFT MANUAL UP/DOWN ASSEMBLY	14
TOP LEFT MANUAL UP/DOWN ASSEMBLY	16
BLADE GUIDE ASSEMBLY, IDLE SIDE (TOP).....	18
BLADE GUIDE ASSEMBLY, IDLE SIDE (BOTTOM).....	20
BLADE GUIDE ASSEMBLY, DRIVE SIDE (TOP).....	22
BLADE GUIDE ASSEMBLY, DRIVE SIDE (BOTTOM).....	24
SUB FRAME ASSEMBLY, BLADE TENSIONING	26
SUB FRAME ASSEMBLY, MANUAL BLADE TENSIONING	28
MOTOR ASSEMBLY	30
WHEEL ASSEMBLY (DRIVE SIDE).....	32
WHEEL ASSEMBLY (IDLE SIDE).....	34
INFEED HOLD DOWN ROLLER	36
OUTFEED HOLD DOWN ROLLER	38
FEED CONVEYOR (INFEED SECTION).....	39
FEED CONVEYOR (OUTFEED SECTION).....	41
COVER ASSEMBLY (BACK AND SIDES).....	43
COVER ASSEMBLY (TOP AND BOTTOM).....	45
DOOR COVER ASSEMBLY	47
CONTROL PANEL	49

GENERAL INFORMATION

How to Use The Parts List

- Use the index above to locate the assembly that contains the part you need.
- Go to the appropriate section and locate the part in the illustration.
- Use the number pointing to the part to locate the correct part number and description in the table
- Parts shown indented under another part are included with that part.

Example: How to order required parts:

Ref #: corresponds to the number on the illustration.

Description: A brief description of the part.

Part #: The number used by Wood-Mizer to identify parts.

Quantity: the quantity required for each specific part for the assembly.

To order, identify the part required with use of the **Ref #**. Contact your local Wood-Mizer dealer and provide them with the **Part #** and quantity you require.

Ref	DESCRIPTION	PART #	QTY
1	HR250 FRAME	116579	1
2	Encoder Mounting Bracket	116247	2
3	6mm x 40mmø, Plastic Slide	116276	4

To Order Parts:

From Asia call our Manufacturing Facility in Taichung City, Taiwan at **+886 4 2359 3022**. From Europe call our European Headquarters and Manufacturing Facility in Kolo, Poland at **+48-63-2626000**. From the continental U.S., call our toll-free Parts hotline at **1-800-525-8100**. Have your customer number, vehicle identification number, and part numbers ready when you call. From other international locations, contact the Wood-Mizer distributor in your area for parts.

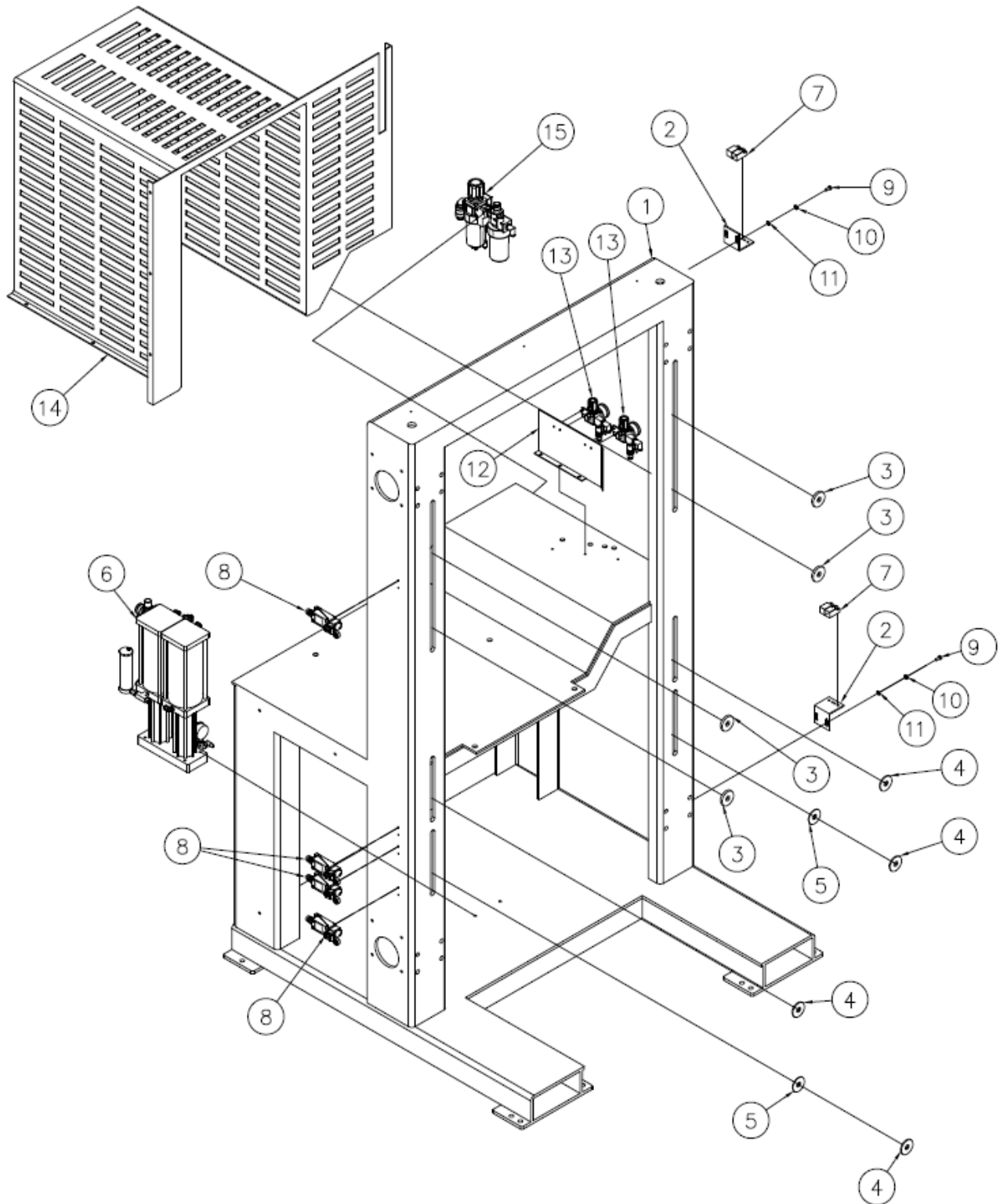
Office Hours:

Country	Monday - Friday	Saturday	Sunday
Taiwan	08:30 - 17:30	Closed	Closed
Poland	07:00 - 15:00	Closed	Closed
US	08:00 - 17:00	08:00 - 12:00	Closed



CAUTION! It is strongly recommended that only original spare parts be used.

FRAME ASSEMBLY

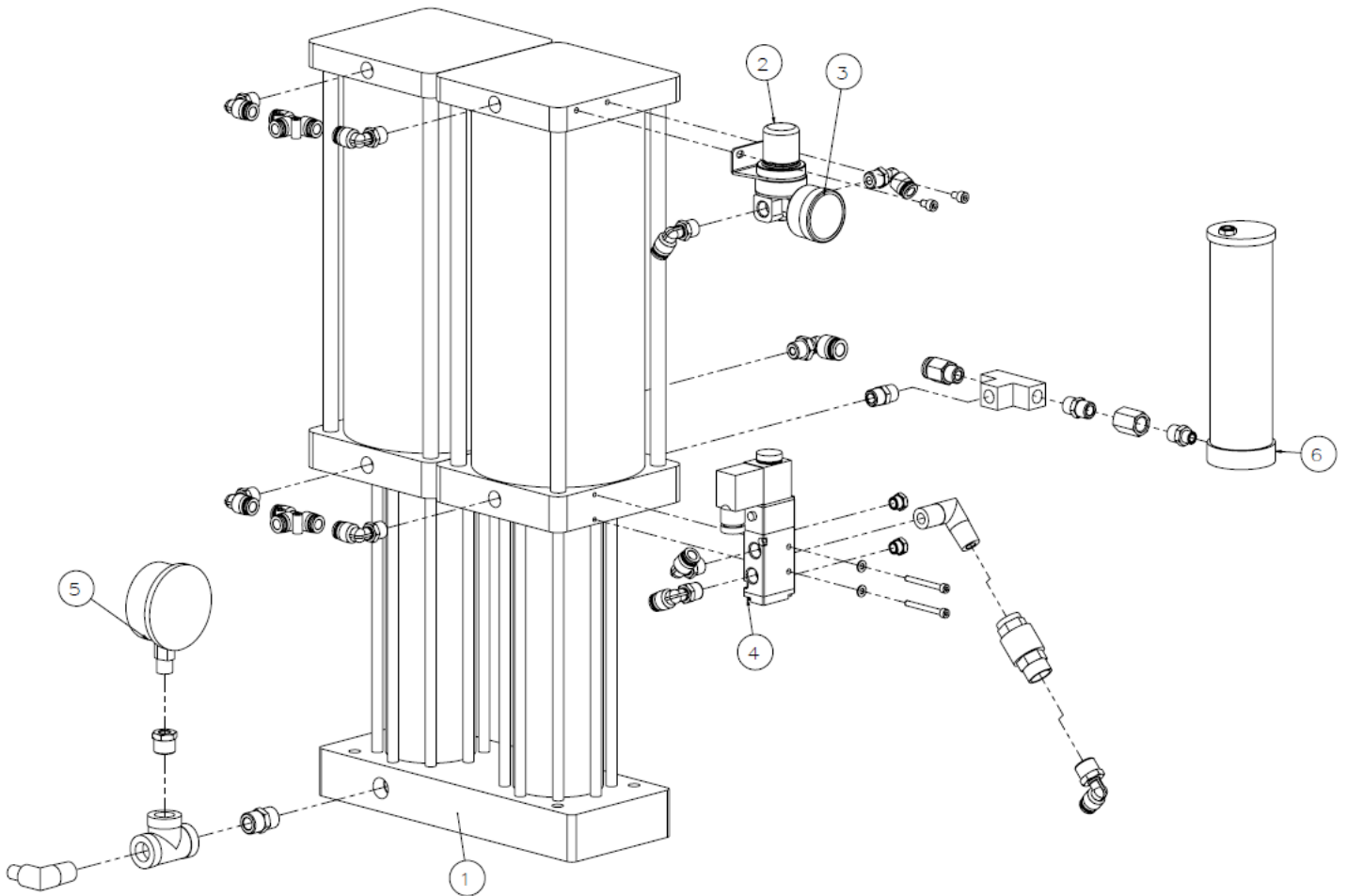


Ref	DESCRIPTION	PART #	QTY
1	HR250 FRAME	116579	1
	HR250 FRAME (Wide)	116695	1

FRAME ASSEMBLY

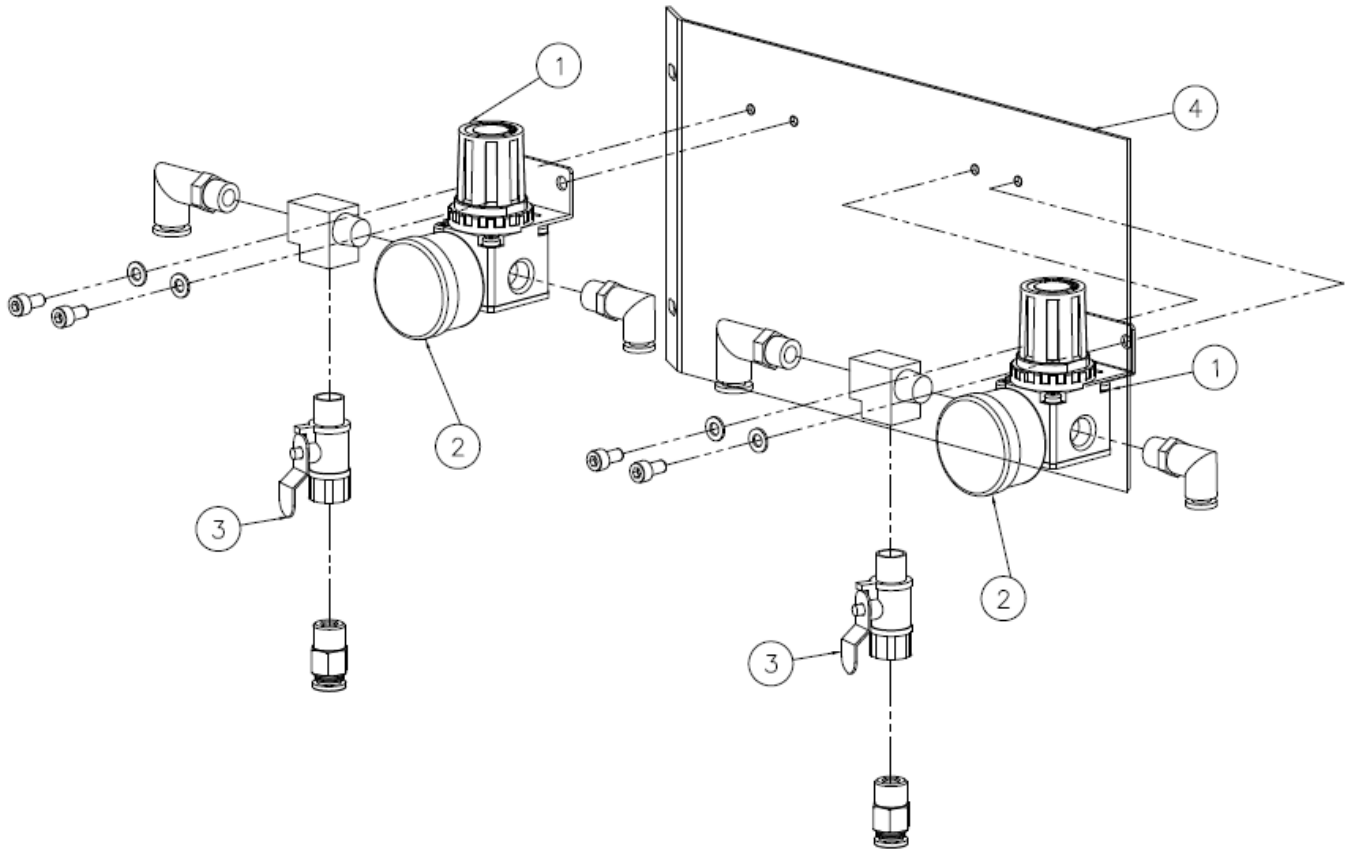
Ref	DESCRIPTION	PART #	QTY
2	Encoder Mounting Bracket	116247	2
3	6mm x 40mmø, Plastic Slide	116276	4
4	3mm x 40mmø, Plastic Slide	116277	4
5	1mm x 40mmø, Plastic Slide	116278	2
6	Air/Oil pressure assembly (Complete)	116025	1
7	PL-05NBS-4M, Proximity Sensor	116307	4
8	XCKN2118G11, Limit Switch	116567	4
9	Socket head hex screw M6x16- 8.8, FE/ZN5, PN/M82302	F81001-34	4
10	Large Plain Washer 6.4, FE/ZN5, PN/M82030	F81053-11	4
11	Washer 6.1, Split Lock, FE/ZN5, PN/M82008	F81053-3	4
12	Pressure Regulator Mounting Plate	116610	1
13	Pressure Regulator Assembly, MA R200-8A (Complete)	116587	2
14	Outfeed Guard Cover (CE Version)	116609	1
	Outfeed Guard Cover (CE Version)- Wide	116456	1
15	Air Filter Regulator assembly, MAL401-10A	116611	1

AIR/ OIL PRESSURE ASSEMBLY



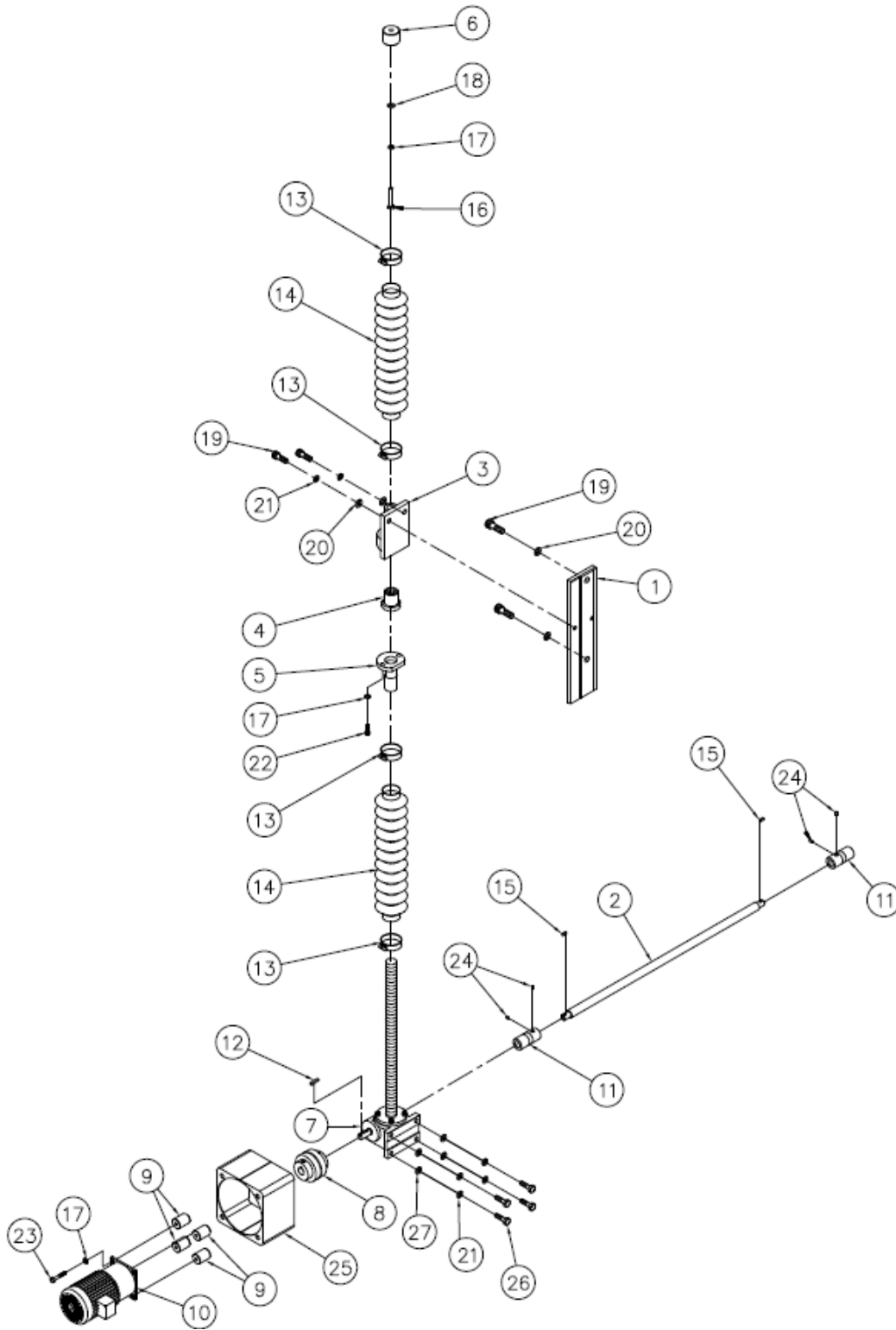
Ref	DESCRIPTION	PART #	QTY
1	Air/Oil pressure assembly (Complete)	116025	1
2	Pressure Regulator Assembly, MA R200-8A (Complete)	116587	1
3	1.5", IMPA/PSI, Pressure Gauge	116045	1
4	4V210-08, Solenoid Valve	116618	1
5	Pressure Gauge, 150 Kg/cm	116576	1
6	Hydraulic Oil Refill Check.	116617	1

PRESSURE REGULATOR ASSEMBLY



Ref	DESCRIPTION	PART #	QTY
1	Pressure Regulator, MA R200-8A Section	116069	2
	Pressure Regulator Assembly, MA R200-8A (Complete)	116587	2
2	1.5", IMPA/PSI, Pressure Gauge	116045	2
3	Pneumatic Ball Valve	116619	2
4	Pressure Regulator Mounting Plate	116610	1

BOTTOM LEFT UP/ DOWN ASSEMBLY

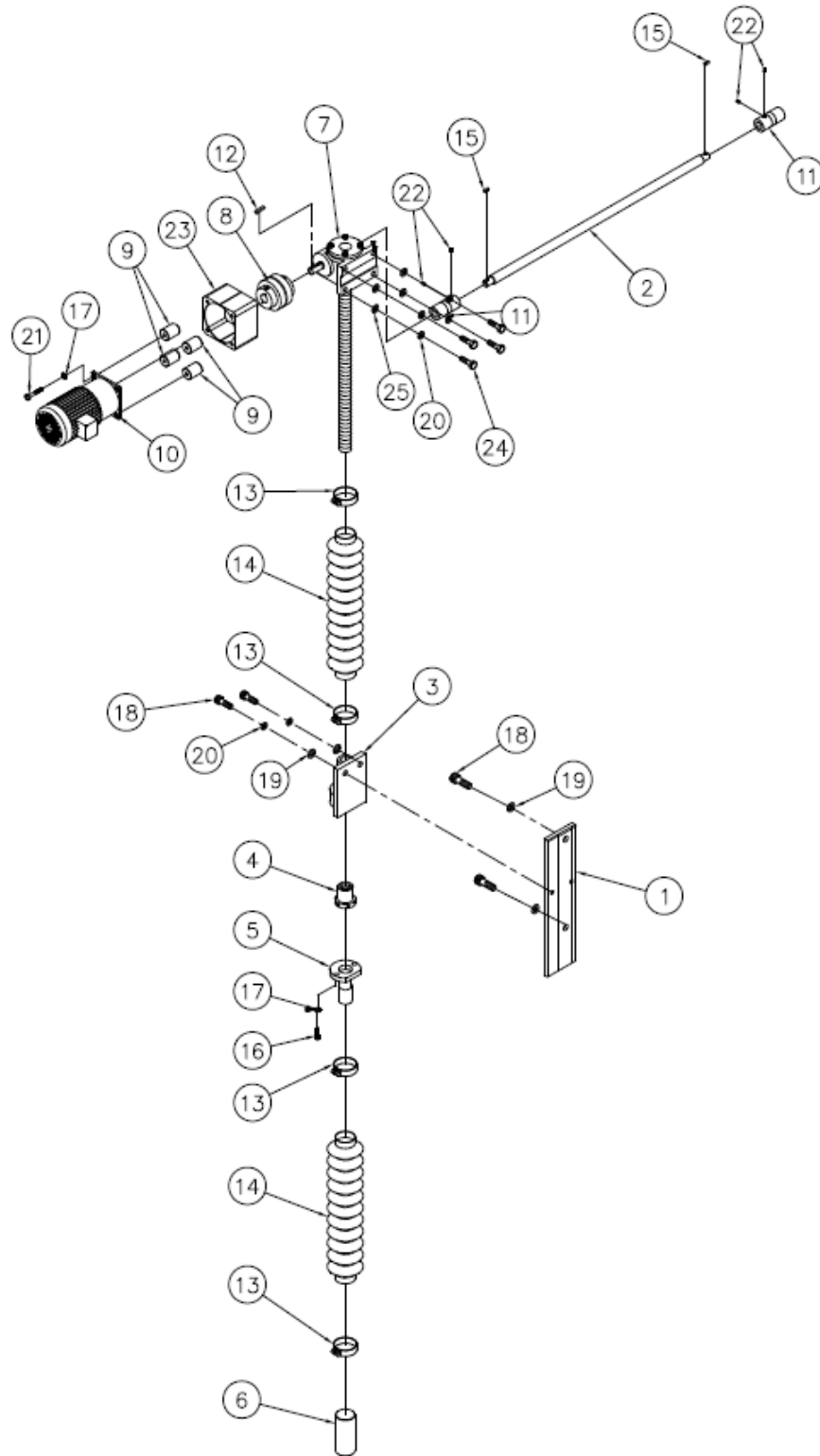


Ref	DESCRIPTION	PART #	QTY
1	Up/Down Mounting Plate	116140	1
2	Connecting Rod	116483	1
	Connecting Rod (Wide)		1

BOTTOM LEFT UP/ DOWN ASSEMBLY

Ref	DESCRIPTION	PART #	QTY
3	Up/Down Mounting Sleeve	116142	1
4	Brass Threaded Bushing	116161	1
5	Mounting Sleeve	116143	1
6	30mm x 38mmø, Spacer	116165	1
7	Up/Down Gear Box Assembly	116580	1
8	NM-67, Flexible Coupling	116272	1
9	75mm x 20mmø, Spacer	116127	4
10	SV-A10, 0,2kW, 230-460V/60Hz, Up/Down Motor	116564	1
	SV-A10, 0,2kW, 400V/50Hz, Up/Down Motor	116565	1
11	Up/Down Flex Joint	116126	2
12	Double Head Round Key, 6x6x25-A, PN/M85005	534277	1
13	Hose Clamp NO.24 25-51mm	116468	4
14	Rubber Boot Cover	116304	2
15	Double Head Round Key, PN/M85005	116612	2
16	Hex Head Bolt, M8x50, FE/ZN5, PN/M82105, Full Thread	F81002-9	1
17	Washer 8.2, Split Lock, FE/ZN5, PN/M82008	F81054-4	7
18	Flat Washer 8.4, FE/ZN5, PN/M82005	F81054-1	1
19	Hex Socket Screw, M10x20-8.8, FE/ZN5, PN/M82302	F81003-108	4
20	Flat Washer 10.5, FE/ZN5, PN/M82005	F81055-1	4
21	Washer 10.2, Split Lock, FE/ZN5, PN/M82008	F81055-2	8
22	Hex Socket Screw, M8x35-8.8, FE/ZN5, PN/M82302	F81002-58	2
23	Hex Socket Screw, M8x100-8.8, FE/ZN5, ISO4762	F81002-97	4
24	Set Screw, M6x8, 45H, PN/M82315	F81013-1	4
25	Protective Shaft Cover	116613	1
26	Hex Head Bolt, M10x35-8.8, FE/ZN5, PN/M82105, Full Thread	F81003-17	4
27	Flat Washer 10.5, FE/ZN5, PN/M82005	F81055-1	4

TOP LEFT UP/ DOWN ASSEMBLY

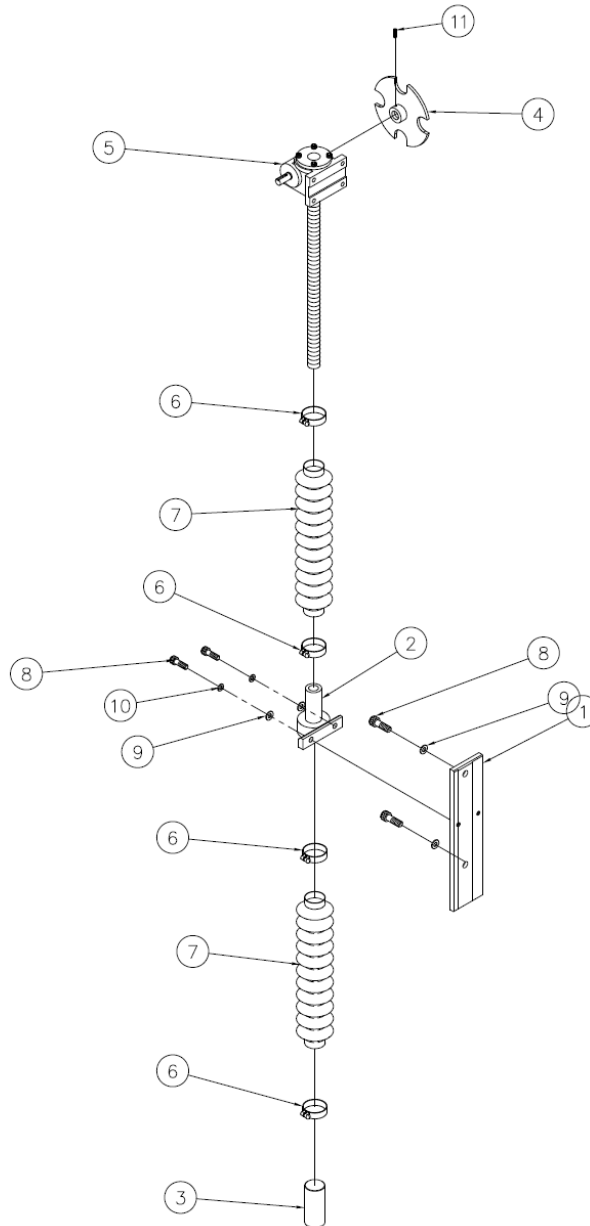


Ref	DESCRIPTION	PART #	QTY
1	Up/Down Mounting Plate	116140	1
2	Connecting Rod	116483	1
	Connecting Rod (Wide)		1

TOP LEFT UP/ DOWN ASSEMBLY

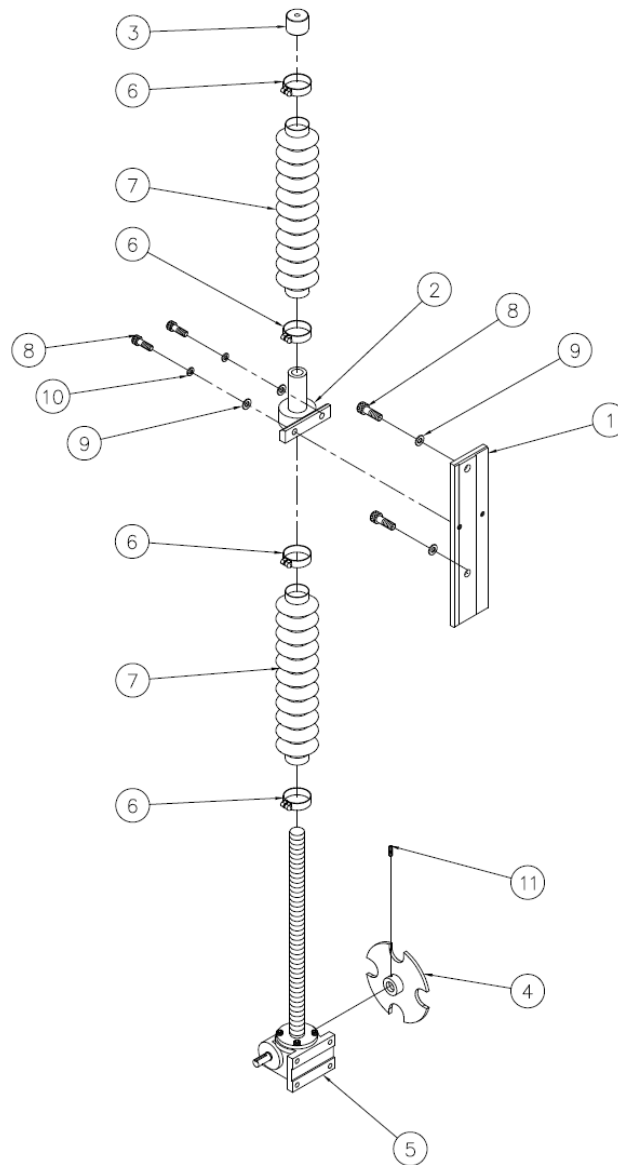
Ref	DESCRIPTION	PART #	QTY
3	Up/Down Mounting Sleeve	116142	1
4	Brass Threaded Bushing	116161	1
5	Mounting Sleeve	116143	1
6	90mm x 40mmø, Spacer	116164	1
7	Up/Down Gear Box Assembly	116580	1
8	NM-67, Flexible Coupling	116272	1
9	75mm x 20mmø, Spacer	116127	4
10	SV-A10, 0,2kW, 230-460V/60Hz, Up/Down Motor	116564	1
	SV-A10, 0,2kW, 400V/50Hz, Up/Down Motor	116565	1
11	Up/Down Flex Joint	116126	2
12	Double Head Round Key, 6x6x25-A, PN/M85005	534277	1
13	Hose Clamp NO.24 25-51mm	116468	4
14	Rubber Boot Cover	116304	2
15	Double Head Round Key, PN/M85005	116612	2
16	Hex Socket Screw, M8x35-8.8, FE/ZN5, PN/M82302	F81002-58	2
17	Washer 8.2, Split Lock, FE/ZN5, PN/M82008	F81054-4	6
18	Hex Socket Screw, M10x20-8.8, FE/ZN5, PN/M82302	F81003-108	4
19	Flat Washer 10.5, FE/ZN5, PN/M82005	F81055-1	4
20	Washer 10.2, Split Lock, FE/ZN5, PN/M82008	F81055-2	8
21	Hex Socket Screw, M8x100-8.8, FE/ZN5, ISO4762	F81002-97	4
22	Set Screw, M6x8, 45H, PN/M82315	F81013-1	4
23	Protective Shaft Cover	116613	1
24	Hex Head Bolt, M10x35-8.8, FE/ZN5, PN/M82105, Full Thread	F81003-17	4
25	Flat Washer 10.5, FE/ZN5, PN/M82005	F81055-1	4

TOP RIGHT UP/ DOWN ASSEMBLY



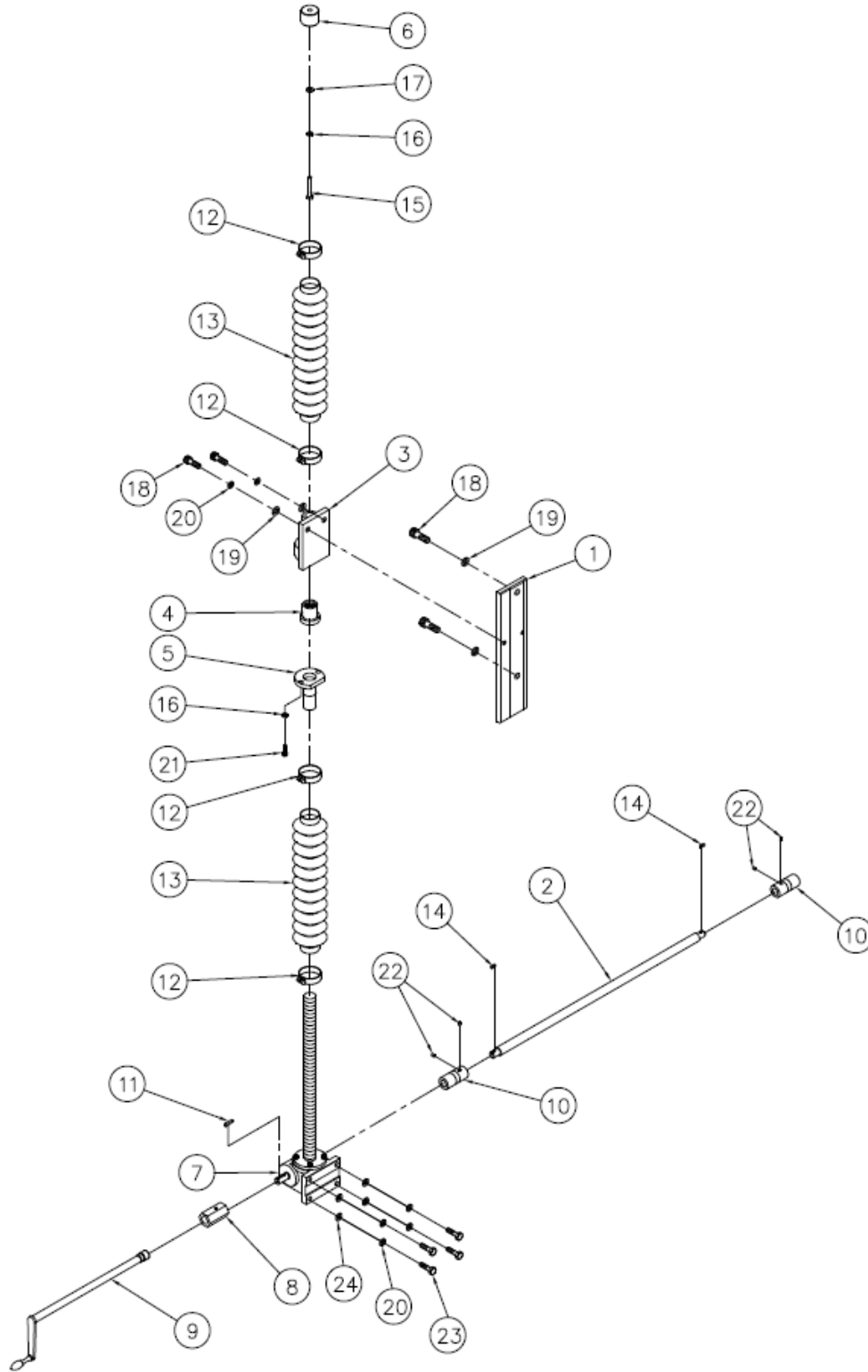
Ref	DESCRIPTION	PART #	QTY
1	Up/Down Mounting Plate	116140	1
2	Mounting Sleeve	116144	1
3	90mm x 40mmø, Spacer	116164	1
4	Sensor Plate	116234	1
5	Up/Down Gear Box Assembly	116580	1
6	Hose Clamp NO.24 25-51mm	116468	4
7	Rubber Boot Cover	116304	2
8	Hex Socket Screw, M10x20-8.8, FE/ZN5, PN/M82302	F81003-108	4
9	Flat Washer 10.5, FE/ZN5, PN/M82005	F81055-1	4
10	Washer 10.2, Split Lock, FE/ZN5, PN/M82008	F81055-2	4
11	Set Screw, M6x8, 45H, PN/M82315	F81013-1	1

BOTTOM RIGHT UP/ DOWN ASSEMBLY



Ref	DESCRIPTION	PART #	QTY
1	Up/Down Mounting Plate	116140	1
2	Mounting Sleeve	116144	1
3	30mm x 38mmø, Spacer	116165	1
4	Sensor Plate	116234	1
5	Up/Down Gear Box Assembly	116580	1
6	Hose Clamp NO.24 25-51mm	116468	4
7	Rubber Boot Cover	116304	2
8	Hex Socket Screw, M10x20-8.8, FE/ZN5, PN/M82302	F81003-108	4
9	Flat Washer 10.5, FE/ZN5, PN/M82005	F81055-1	4
10	Washer 10.2, Split Lock, FE/ZN5, PN/M82008	F81055-2	4
11	Set Screw, M6x8, 45H, PN/M82315	F81013-1	1

BOTTOM LEFT MANUAL UP/ DOWN ASSEMBLY

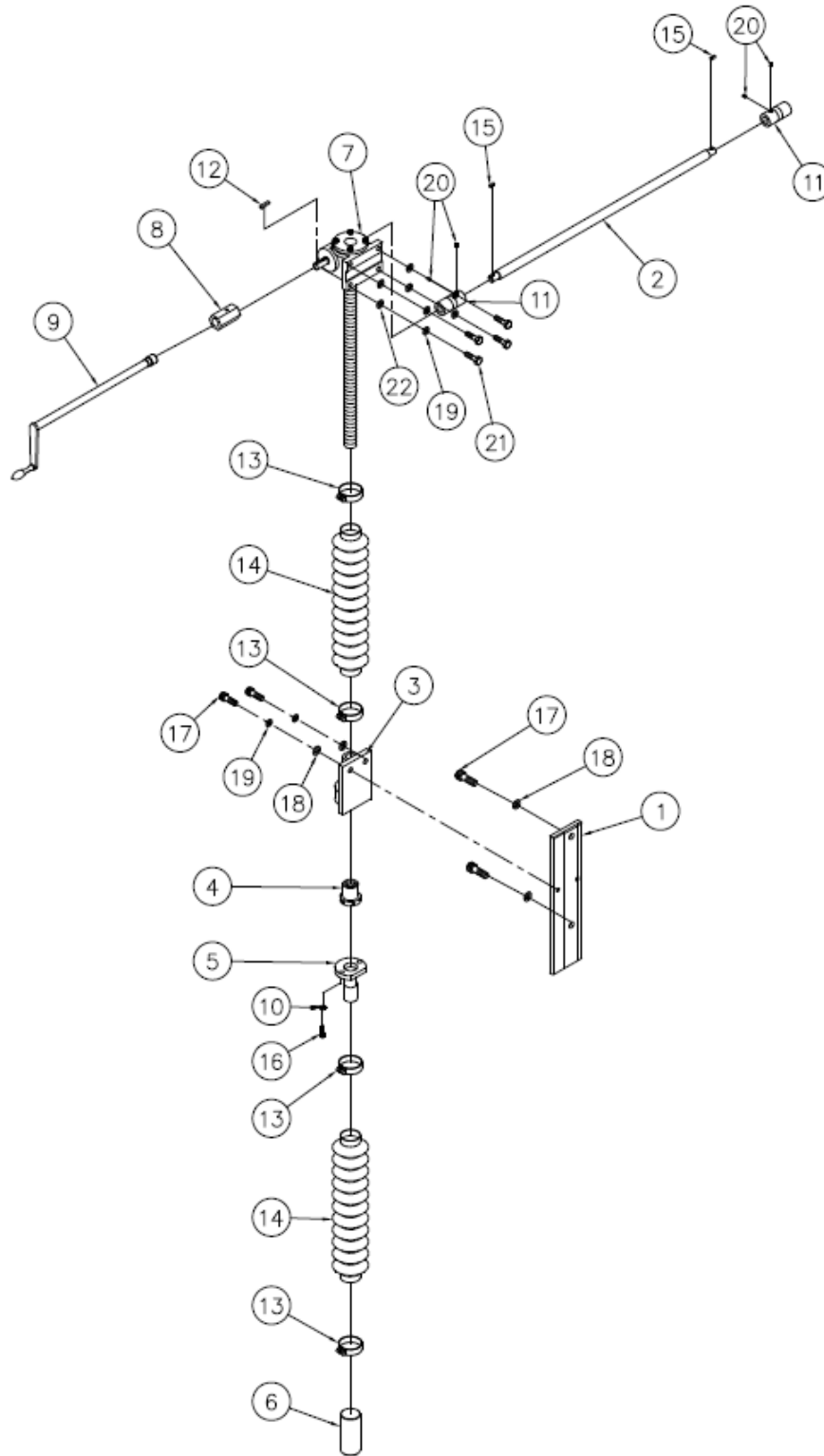


Ref	DESCRIPTION	PART #	QTY
1	Up/Down Mounting Plate	116140	1
2	Connecting Rod	116483	1
	Connecting Rod (Wide)		1

BOTTOM LEFT MANUAL UP/ DOWN ASSEMBLY

Ref	DESCRIPTION	PART #	QTY
3	Up/Down Mounting Sleeve	116142	1
4	Brass Threaded Bushing	116161	1
5	Mounting Sleeve	116143	1
6	30mm x 38mmø, Spacer	116165	1
7	Up/Down Gear Box Assembly	116580	1
8	Adjustment Handle Fitting	116614	1
9	Adjustment Handle, Up/ Down Sizing	116238	1
10	Up/Down Flex Joint	116126	2
11	Double Head Round Key, 6x6x25-A, PN/M85005	534277	1
12	Hose Clamp NO.24 25-51mm	116468	4
13	Rubber Boot Cover	116304	2
14	Double Head Round Key, PN/M85005	116612	2
15	Hex Head Bolt, M8x50, FE/ZN5, PN/M82105, Full Thread	F81002-9	1
16	Washer 8.2, Split Lock, FE/ZN5, PN/M82008	F81054-4	3
17	Flat Washer 8.4, FE/ZN5, PN/M82005	F81054-1	1
18	Hex Socket Screw, M10x20-8.8, FE/ZN5, PN/M82302	F81003-108	4
19	Flat Washer 10.5, FE/ZN5, PN/M82005	F81055-1	4
20	Washer 10.2, Split Lock, FE/ZN5, PN/M82008	F81055-2	8
21	Hex Socket Screw, M8x35-8.8, FE/ZN5, PN/M82302	F81002-58	2
22	Set Screw, M6x8, 45H, PN/M82315	F81013-1	4
23	Hex Head Bolt, M10x35-8.8, FE/ZN5, PN/M82105, Full Thread	F81003-17	4
24	Flat Washer 10.5, FE/ZN5, PN/M82005	F81055-1	4

TOP LEFT MANUAL UP/ DOWN ASSEMBLY

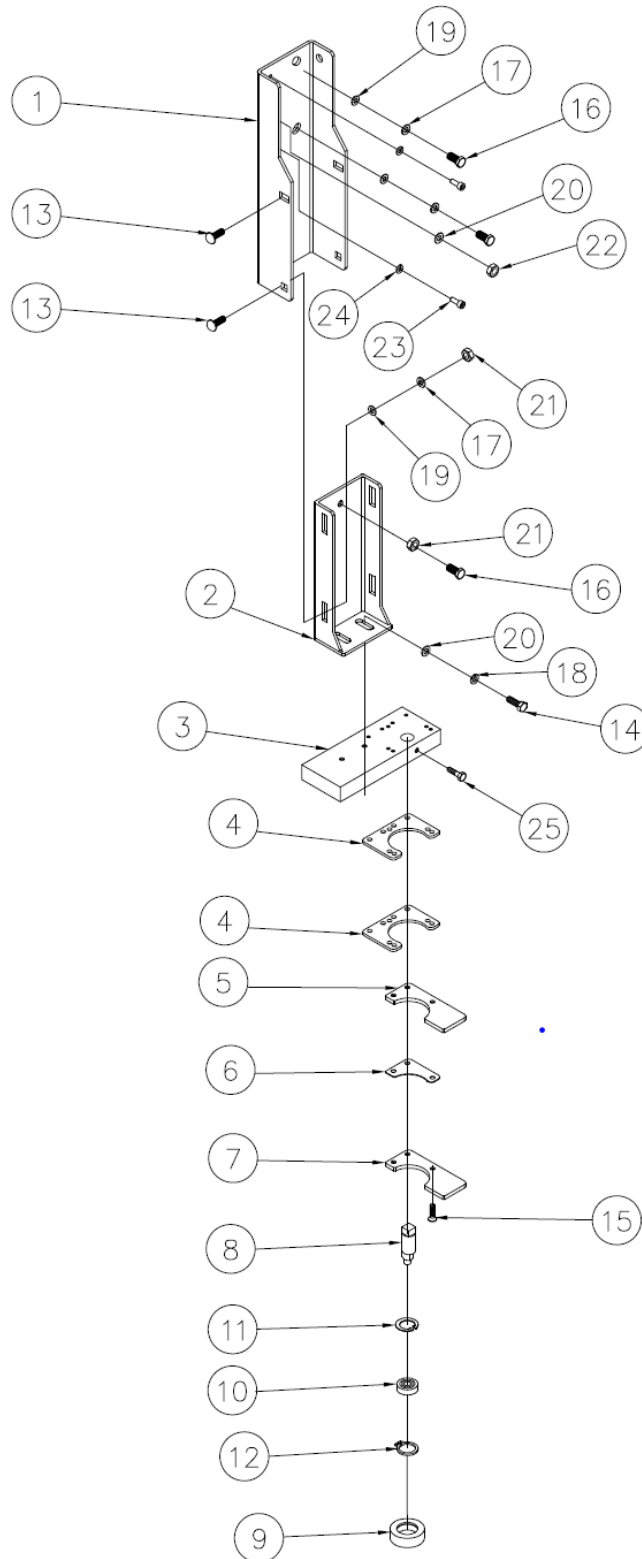


Ref	DESCRIPTION	PART #	QTY
1	Up/Down Mounting Plate	116140	1
2	Connecting Rod	116483	1
	Connecting Rod (Wide)		1

TOP LEFT MANUAL UP/ DOWN ASSEMBLY

Ref	DESCRIPTION	PART #	QTY
3	Up/Down Mounting Sleeve	116142	1
4	Brass Threaded Bushing	116161	1
5	Mounting Sleeve	116143	1
6	90mm x 40mm \varnothing , Spacer	116164	1
7	Up/Down Gear Box Assembly	116580	1
8	Adjustment Handle Fitting	116614	1
9	Adjustment Handle, Up/ Down Sizing	116238	1
10	Washer 8.2, Split Lock, FE/ZN5, PN/M82008	F81054-4	2
11	Up/Down Flex Joint	116126	2
12	Double Head Round Key, 6x6x25-A, PN/M85005	534277	1
13	Hose Clamp NO.24 25-51mm	116468	4
14	Rubber Boot Cover	116304	2
15	Double Head Round Key, PN/M85005	116612	2
16	Hex Socket Screw, M8x35-8.8, FE/ZN5, PN/M82302	F81002-58	2
17	Hex Socket Screw, M10x20-8.8, FE/ZN5, PN/M82302	F81003-108	4
18	Flat Washer 10.5, FE/ZN5, PN/M82005	F81055-1	4
19	Washer 10.2, Split Lock, FE/ZN5, PN/M82008	F81055-2	8
20	Set Screw, M6x8, 45H, PN/M82315	F81013-1	4
21	Hex Head Bolt, M10x35-8.8, FE/ZN5, PN/M82105, Full Thread	F81003-17	4
22	Flat Washer 10.5, FE/ZN5, PN/M82005	F81055-1	4

BLADE GUIDE ASSEMBLY, IDLE SIDE (TOP)

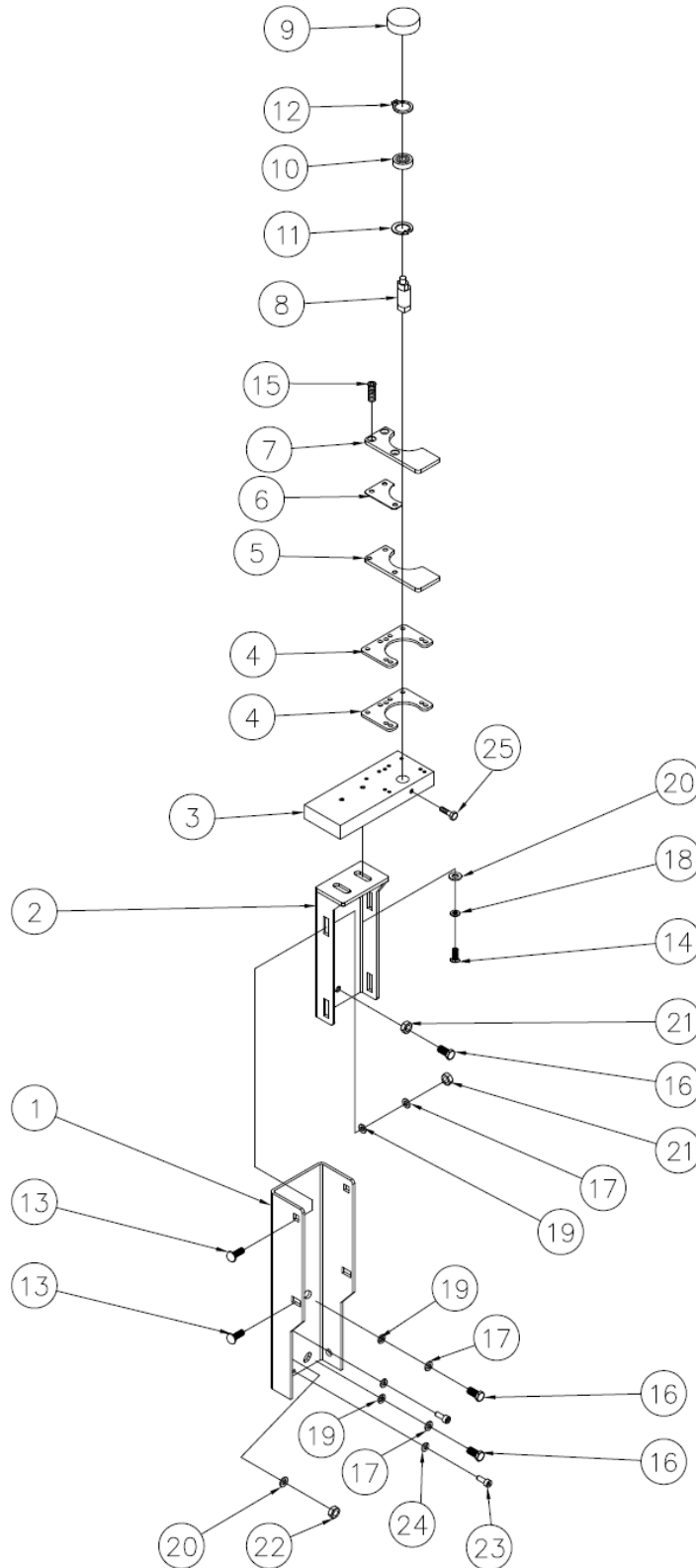


Ref	DESCRIPTION	PART #	QTY
1	Guide Assembly Mounting Frame	116589	1
2	Blade Guide Mounting Bracket (Idle Side)	116590	1

BLADE GUIDE ASSEMBLY, IDLE SIDE (TOP)

Ref	DESCRIPTION	PART #	QTY
3	Guide Plates Connector Block (Idle Side)	116162	1
4	Blade Guide Connector Plates	116108	2
5	Top Blade Guide Plate 1¼"	116115	1
	Top Blade Guide Plate 2"	116117	1
6	1mm, Shim	116112	1
	1.2mm, Shim	116113	1
	1.5mm, Shim	116109	1
7	Bottom Blade Guide Plate 1¼"	116114	1
	Bottom Blade Guide Plate 2"	116116	1
8	Eccentric Shaft	116129	1
9	Bearing Seat	116128	1
10	Bearing- 6200RS	116087	1
11	Ring, W30, Inside Retaining, PN/M85111	F81090-15	1
12	Ring, 210 Outside Retaining, PN/M85111	F81090-13	1
13	Carriage Bolt, M10x25, FE/ZN5, PN/M82406	F81003-59	4
14	Hex Head Bolt, M8x30-8.8, FE/ZN5, PN/M82105, Full Thread	F81002-7	2
15	Counter Sunk Flat Head Screw, M6x25-8.8, FE/ZN5, DIN965	F81001-91	3
16	Hex Head Bolt, M10x40-8.8, FE/ZN5, PN/M82105, Full Thread	F81003-6	3
17	Washer 10.2, Split Lock, FE/ZN5, PN/M82008	F81055-2	6
18	Washer 8.2, Split Lock, FE/ZN5, PN/M82008	F81054-4	2
19	Flat Washer 10.5x20x3, FE/ZN5, PN/M82005	F81055-1	6
20	Large Plain Washer 8x30x3, FE/ZN5	534284	3
21	Hex Nut, M10-8-B, FE/ZN5, PN/M82144	F81033-3	5
22	Hex Nut, M12-8-B, FE/ZN5, PN/M82144	F81034-1	1
23	Socket Head Hex Screw, M6x16-8.8, FE/ZN5, PN/M82302	F81001-34	2
24	Washer 6.1, Split Lock, FE/ZN5, PN/M82008	F81053-3	2
25	Hex Head Bolt, M8x25-8.8, FE/ZN5, PN/M82105, Full Thread	F81002-5	1

BLADE GUIDE ASSEMBLY, IDLE SIDE (BOTTOM)

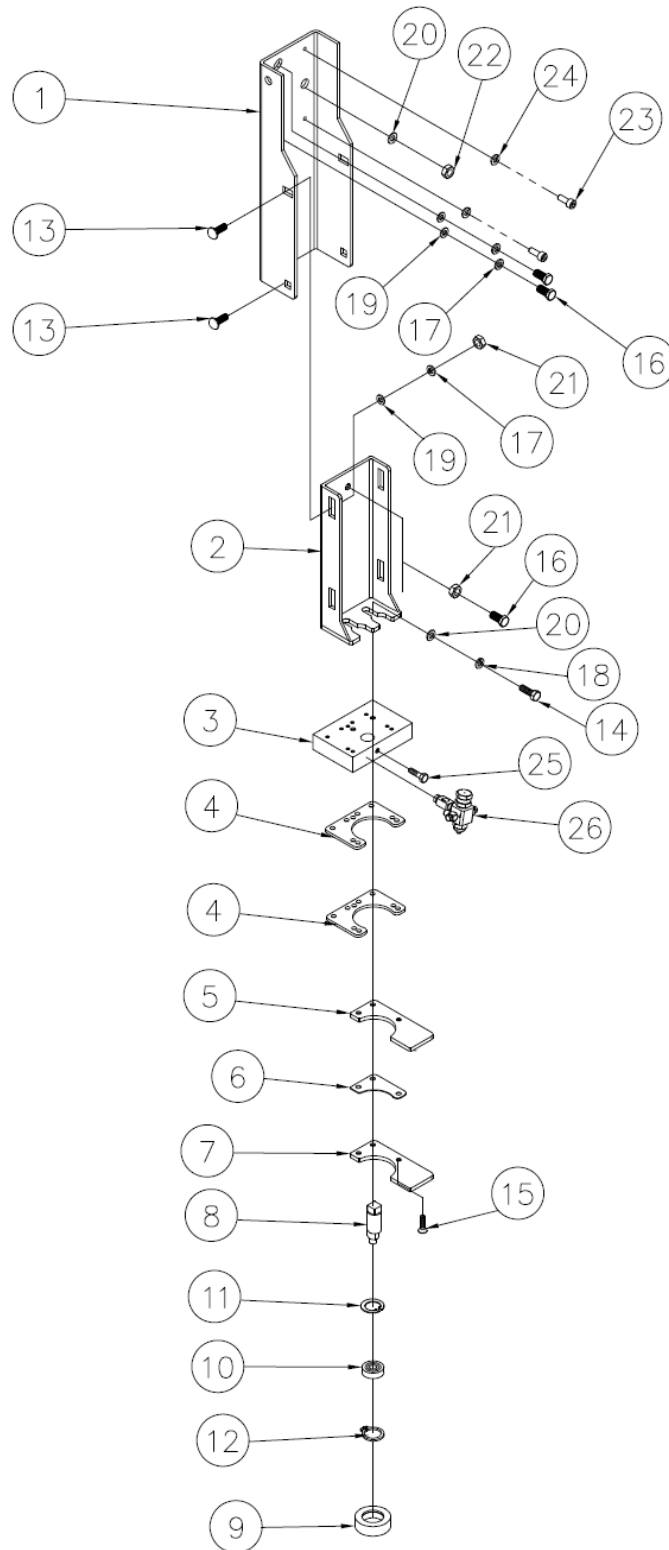


Ref	DESCRIPTION	PART #	QTY
1	Guide Assembly Mounting Frame	116589	1
2	Blade Guide Mounting Bracket (Idle Side)	116590	1

BLADE GUIDE ASSEMBLY, IDLE SIDE (BOTTOM)

Ref	DESCRIPTION	PART #	QTY
3	Guide Plates Connector Block (Idle Side)	116162	1
4	Blade Guide Connector Plates	116108	2
5	Top Blade Guide Plate 1¼"	116115	1
	Top Blade Guide Plate 2"	116117	1
6	1mm, Shim	116112	1
	1.2mm, Shim	116113	1
	1.5mm, Shim	116109	1
7	Bottom Blade Guide Plate 1¼"	116114	1
	Bottom Blade Guide Plate 2"	116116	1
8	Eccentric Shaft	116129	1
9	Bearing Seat	116128	1
10	Bearing- 6200RS	116087	1
11	Ring, W30, Inside Retaining, PN/M85111	F81090-15	1
12	Ring, 210 Outside Retaining, PN/M85111	F81090-13	1
13	Carriage Bolt, M10x25, FE/ZN5, PN/M82406	F81003-59	4
14	Hex Head Bolt, M8x30-8.8, FE/ZN5, PN/M82105, Full Thread	F81002-7	2
15	Counter Sunk Flat Head Screw, M6x25-8.8, FE/ZN5, DIN965	F81001-91	3
16	Hex Head Bolt, M10x40-8.8, FE/ZN5, PN/M82105, Full Thread	F81003-6	3
17	Washer 10.2, Split Lock, FE/ZN5, PN/M82008	F81055-2	6
18	Washer 8.2, Split Lock, FE/ZN5, PN/M82008	F81054-4	2
19	Flat Washer 10.5x20x3, FE/ZN5, PN/M82005	F81055-1	6
20	Large Plain Washer 8x30x3, FE/ZN5	534284	3
21	Hex Nut, M10-8-B, FE/ZN5, PN/M82144	F81033-3	5
22	Hex Nut, M12-8-B, FE/ZN5, PN/M82144	F81034-1	1
23	Socket Head Hex Screw, M6x16-8.8, FE/ZN5, PN/M82302	F81001-34	2
24	Washer 6.1, Split Lock, FE/ZN5, PN/M82008	F81053-3	2
25	Hex Head Bolt, M8x25-8.8, FE/ZN5, PN/M82105, Full Thread	F81002-5	1

BLADE GUIDE ASSEMBLY, DRIVE SIDE (TOP)

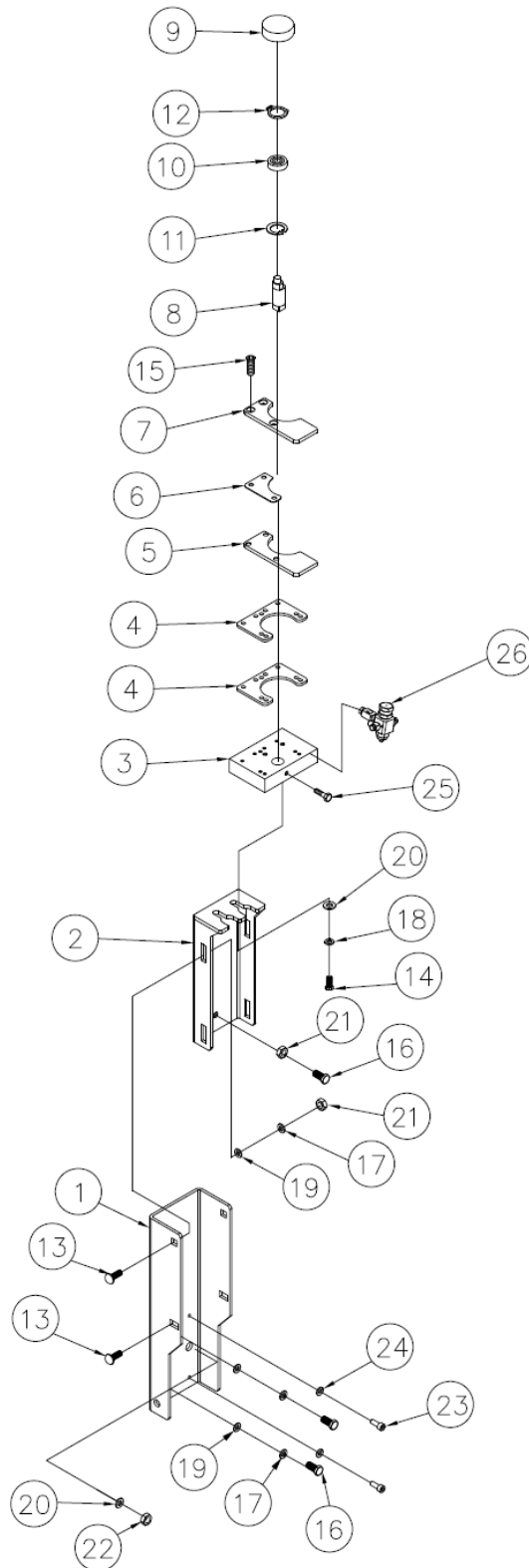


Ref	DESCRIPTION	PART #	QTY
1	Guide Assembly Mounting Frame	116589	1
2	Blade Guide Mounting Bracket (Drive Side)	116591	1

BLADE GUIDE ASSEMBLY, DRIVE SIDE (TOP)

Ref	DESCRIPTION	PART #	QTY
3	Guide Plates Connector Block (Drive Side)	116173	1
4	Blade Guide Connector Plates	116108	2
5	Top Blade Guide Plate 1¼"	116115	1
	Top Blade Guide Plate 2"	116117	1
6	1mm, Shim	116112	1
	1.2mm, Shim	116113	1
	1.5mm, Shim	116109	1
7	Bottom Blade Guide Plate 1¼"	116114	1
	Bottom Blade Guide Plate 2"	116116	1
8	Eccentric Shaft	116129	1
9	Bearing Seat	116128	1
10	Bearing- 6200RS	116087	1
11	Ring, W30, Inside Retaining, PN/M85111	F81090-15	1
12	Ring, 210 Outside Retaining, PN/M85111	F81090-13	1
13	Carriage Bolt, M10x25, FE/ZN5, PN/M82406	F81003-59	4
14	Hex Head Bolt, M8x30-8.8, FE/ZN5, PN/M82105, Full Thread	F81002-7	2
15	Counter Sunk Flat Head Screw, M6x25-8.8, FE/ZN5, DIN965	F81001-91	3
16	Hex Head Bolt, M10x40-8.8, FE/ZN5, PN/M82105, Full Thread	F81003-6	3
17	Washer 10.2, Split Lock, FE/ZN5, PN/M82008	F81055-2	6
18	Washer 8.2, Split Lock, FE/ZN5, PN/M82008	F81054-4	2
19	Flat Washer 10.5x20x3, FE/ZN5, PN/M82005	F81055-1	6
20	Large Plain Washer 8x30x3, FE/ZN5	534284	3
21	Hex Nut, M10-8-B, FE/ZN5, PN/M82144	F81033-3	5
22	Hex Nut, M12-8-B, FE/ZN5, PN/M82144	F81034-1	1
23	Socket Head Hex Screw, M6x16-8.8, FE/ZN5, PN/M82302	F81001-34	2
24	Washer 6.1, Split Lock, FE/ZN5, PN/M82008	F81053-3	2
25	Hex Head Bolt, M8x25-8.8, FE/ZN5, PN/M82105, Full Thread	F81002-5	1
26	Blade Lube Sprayer, DA-E	116030	1

BLADE GUIDE ASSEMBLY, DRIVE SIDE (BOTTOM)

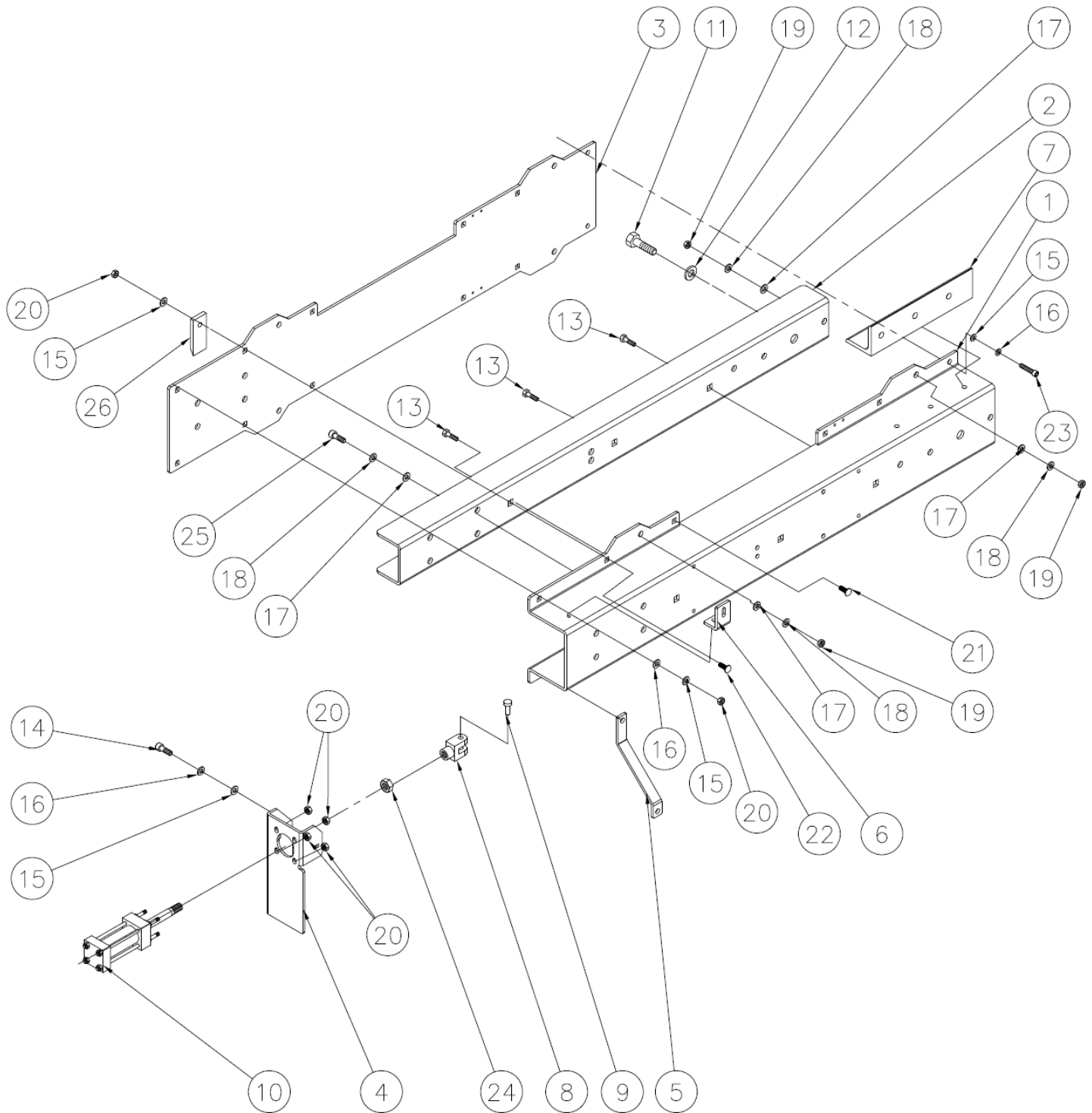


Ref	DESCRIPTION	PART #	QTY
1	Guide Assembly Mounting Frame	116589	1
2	Blade Guide Mounting Bracket (Drive Side)	116591	1

BLADE GUIDE ASSEMBLY, DRIVE SIDE (BOTTOM)

Ref	DESCRIPTION	PART #	QTY
3	Guide Plates Connector Block (Drive Side)	116173	1
4	Blade Guide Connector Plates	116108	2
5	Top Blade Guide Plate 1¼"	116115	1
	Top Blade Guide Plate 2"	116117	1
6	1mm, Shim	116112	1
	1.2mm, Shim	116113	1
	1.5mm, Shim	116109	1
7	Bottom Blade Guide Plate 1¼"	116114	1
	Bottom Blade Guide Plate 2"	116116	1
8	Eccentric Shaft	116129	1
9	Bearing Seat	116128	1
10	Bearing- 6200RS	116087	1
11	Ring, W30, Inside Retaining, PN/M85111	F81090-15	1
12	Ring, 210 Outside Retaining, PN/M85111	F81090-13	1
13	Carriage Bolt, M10x25, FE/ZN5, PN/M82406	F81003-59	4
14	Hex Head Bolt, M8x30-8.8, FE/ZN5, PN/M82105, Full Thread	F81002-7	2
15	Counter Sunk Flat Head Screw, M6x25-8.8, FE/ZN5, DIN965	F81001-91	3
16	Hex Head Bolt, M10x40-8.8, FE/ZN5, PN/M82105, Full Thread	F81003-6	3
17	Washer 10.2, Split Lock, FE/ZN5, PN/M82008	F81055-2	6
18	Washer 8.2, Split Lock, FE/ZN5, PN/M82008	F81054-4	2
19	Flat Washer 10.5x20x3, FE/ZN5, PN/M82005	F81055-1	6
20	Large Plain Washer 8x30x3, FE/ZN5	534284	3
21	Hex Nut, M10-8-B, FE/ZN5, PN/M82144	F81033-3	5
22	Hex Nut, M12-8-B, FE/ZN5, PN/M82144	F81034-1	1
23	Socket Head Hex Screw, M6x16-8.8, FE/ZN5, PN/M82302	F81001-34	2
24	Washer 6.1, Split Lock, FE/ZN5, PN/M82008	F81053-3	2
25	Hex Head Bolt, M8x25-8.8, FE/ZN5, PN/M82105, Full Thread	F81002-5	1
26	Blade Lube Sprayer, DA-E	116030	1

SUB FRAME ASSEMBLY, BLADE TENSIONING

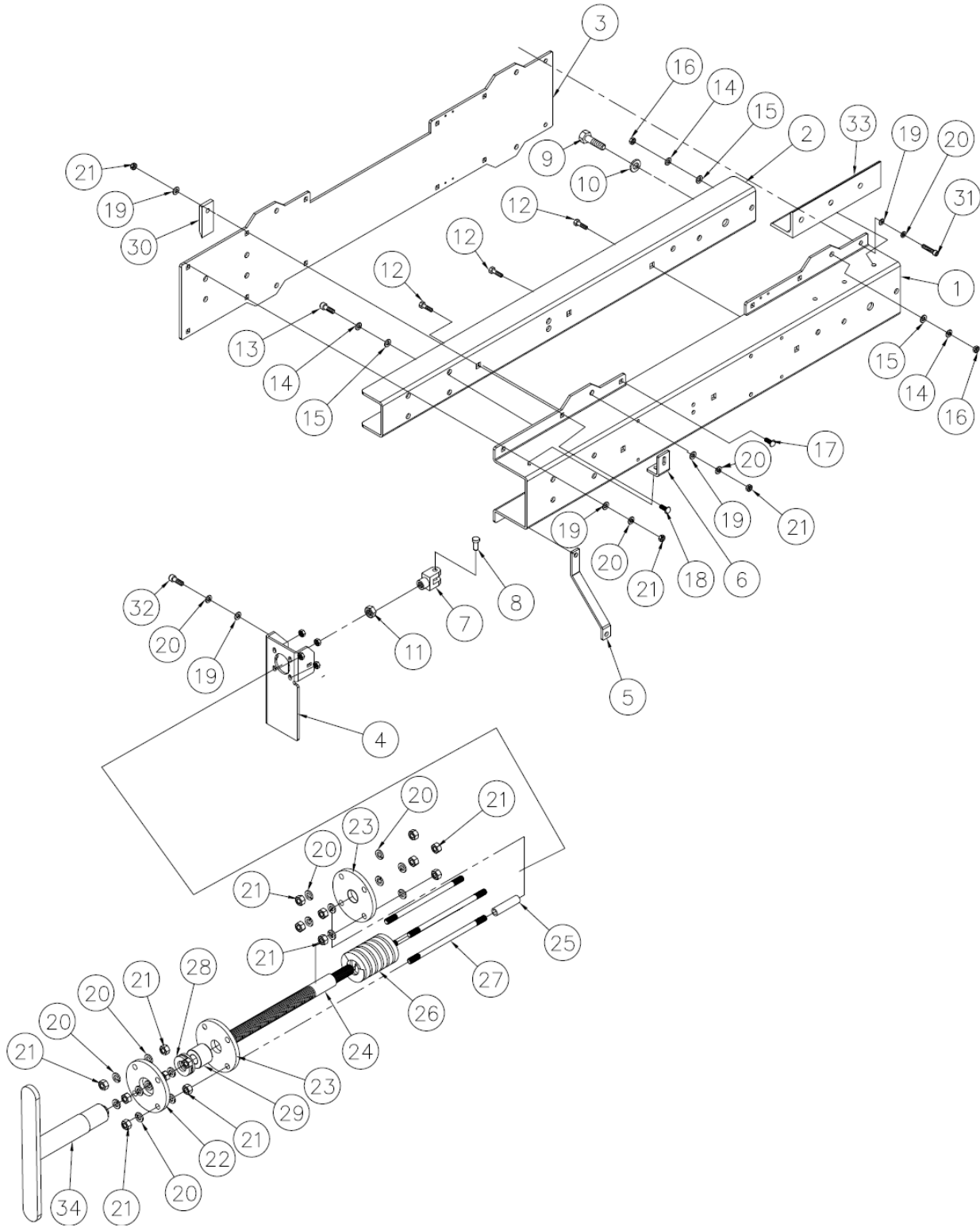


Ref	DESCRIPTION	PART #	QTY
1	Head Mounting Frame	116592	2
	Head Mounting Frame (Wide)	116593	2

SUB FRAME ASSEMBLY

Ref	DESCRIPTION	PART #	QTY
2	Head Mounting Reinforcement Beam	116379	1
	Head Mounting Reinforcement Beam Wide	116380	1
3	Head Mounting Plate	116594	1
	Head Mounting Plate (Wide)	116595	1
4	Air/Oil Tensioning Unit Mounting Bracket	116596	1
5	Mounting Bracket	116254	1
6	L- Shaped Bracket	116258	1
7	Mounting Bracket	116226	1
8	Double Knuckle Joint	116285	1
9	Flat washer 17, FE/ZN5, PN/M82005	F81058-1	1
10	Air/Oil Blade Tensioning Cylinder	116597	2
11	Hex Head Nachire Bolt 3 2/1	116616	1
12	Flat Washer 21, FE/ZN5, PN/M82005	F81059-2	1
13	Carriage Bolt, M12x40-8.8, FE/ZN5, DIN603	F81004-70	3
14	Hex Head Bolt, M10x40-8.8, FE/ZN5, PN/M82105, Full Thread	F81003-6	1
15	Flat Washer 10.5, FE/ZN5, PN/M82005	F81055-1	4
16	Washer 10.2, Split Lock, FE/ZN5, PN/M82008	F81055-2	3
17	Flat Washer 12, FE/ZN5, PN-78/M82005	F81056-1	4
18	Washer 12.2, Split Lock, FE/ZN5, PN/M82008	F81056-2	4
19	Hex Nut, M14-8-B, FE/ZN5, PN/M82144	F81035-1	5
20	Hex Nut, M12-8-B, FE/ZN5, PN/M82144	F81034-1	6
21	Carriage Bolt, M10x40-8.8, FE/ZN5, PN/M82406	F81003-40	4
22	Carriage Bolt, M12x50-8.8, FE/ZN5, PN/M82406	F81004-75	4
23	Hex Head Bolt, M10x30-8.8, FE/ZN5, PN/M82105, Full Thread	F81003-111	1
24	Hex Nut, M16-8-B, FE/ZN5, PN/M82144	F81036-1	1
25	Hex Socket Screw, M12x30-8.8, FE/ZN5, PN/M82302	F81004-105	1
26	Limit Switch Activation Plate	116242	1

SUB FRAME ASSEMBLY, MANUAL BLADE TENSIONING

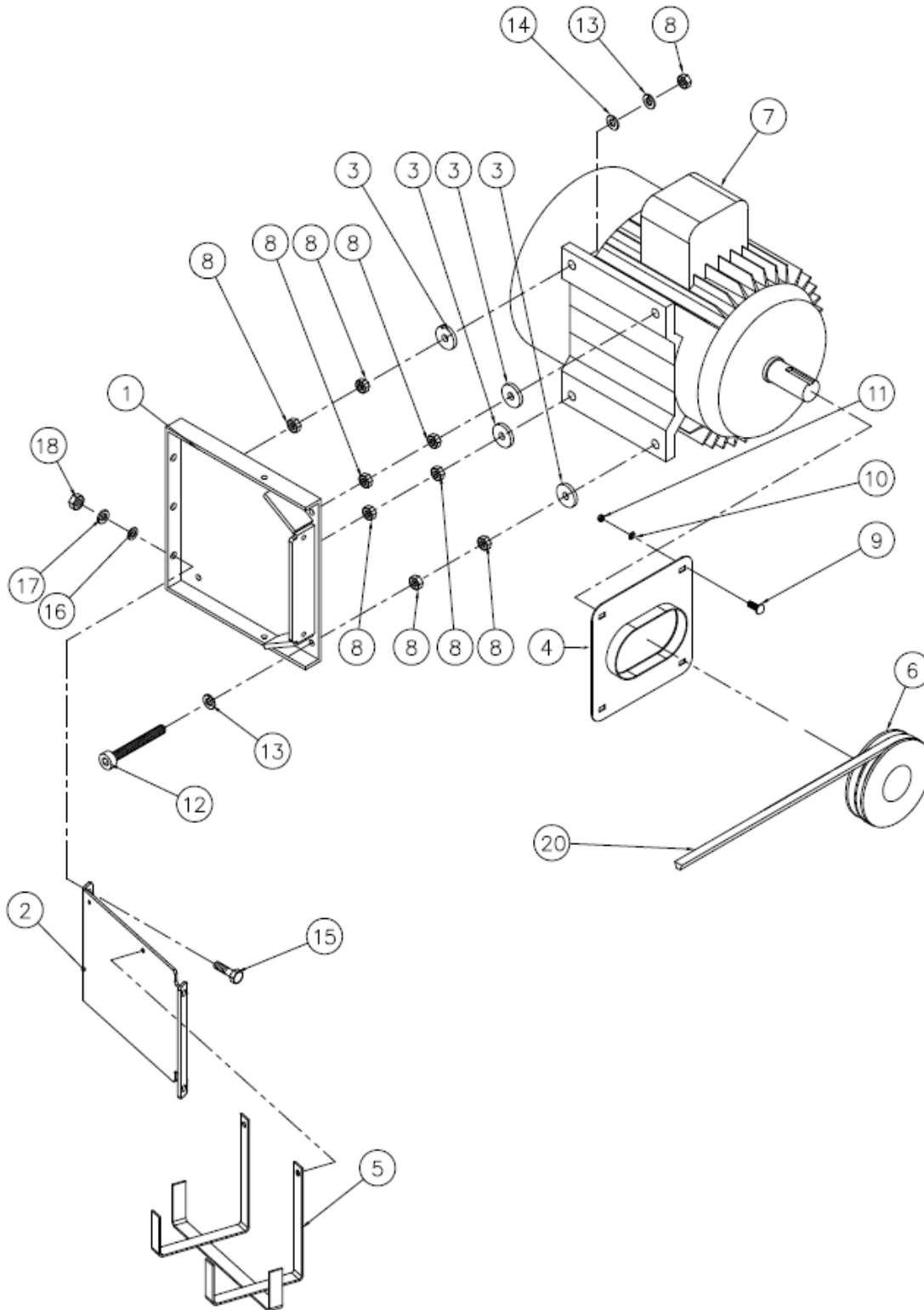


Ref	DESCRIPTION	PART #	QTY
1	Head Mounting Frame	116592	2
	Head Mounting Frame (Wide)	116593	2

SUB FRAME ASSEMBLY, MANUAL BLADE TENSIONING

Ref	DESCRIPTION	PART #	QTY
2	Head Mounting Reinforcement Beam	116379	1
	Head Mounting Reinforcement Beam Wide	116380	1
3	Head Mounting Plate	116594	1
	Head Mounting Plate (Wide)	116595	1
4	Air/Oil Tensioning Unit Mounting Bracket	116596	1
5	Mounting Bracket	116254	1
6	L- Shaped Bracket	116258	1
7	Double Knuckle Joint	116285	1
8	Flat washer 17, FE/ZN5, PN/M82005	F81058-1	1
9	Hex Head Nachire Bolt 3 2/1	116616	1
10	Flat Washer 21, FE/ZN5, PN/M82005	F81059-2	1
11	Hex Nut, M16-8-B, FE/ZN5, PN/M82144	F81036-1	1
12	Carriage Bolt, M12x40-8.8, FE/ZN5, DIN603	F81004-70	3
13	Hex Socket Screw, M12x30-8.8, FE/ZN5, PN/M82302	F81004-105	1
14	Washer 12.2, Split Lock, FE/ZN5, PN/M82008	F81056-2	4
15	Flat Washer 12, FE/ZN5, PN-78/M82005	F81056-1	4
16	Hex Nut, M14-8-B, FE/ZN5, PN/M82144	F81035-1	5
17	Carriage Bolt, M10x40-8.8, FE/ZN5, PN/M82406	F81003-40	4
18	Carriage Bolt, M12x50-8.8, FE/ZN5, PN/M82406	F81004-75	4
19	Washer 10.2, Split Lock, FE/ZN5, PN/M82008	F81055-2	3
20	Flat Washer 10.5, FE/ZN5, PN/M82005	F81055-1	16
21	Hex Nut, M12-8-B, FE/ZN5, PN/M82144	F81034-1	18
22	Manual Tensioning Bracket (Outer)	116231	1
23	Manual Tensioning Bracket (Inner)	116232	1
24	Connecting Rod	116485	1
25	Rubber Tubing	116620	4
26	Tension Spring	116179	1
27	Threaded Rod, M10x200-8.8, FE/ZN5, DIN975	534282	4
28	Thrust Ball Bearing 51101	116086	1
29	30mm x 38mmø, Spacer	116241	1
30	Limit Switch Activation Plate	116242	1
31	Hex Head Bolt, M10x30-8.8, FE/ZN5, PN/M82105, Full Thread	F81003-111	1
32	Hex Head Bolt, M10x40-8.8, FE/ZN5, PN/M82105, Full Thread	F81003-6	1
33	Mounting Bracket	116226	1
34	Blade Tension Handle	116211	1

MOTOR ASSEMBLY

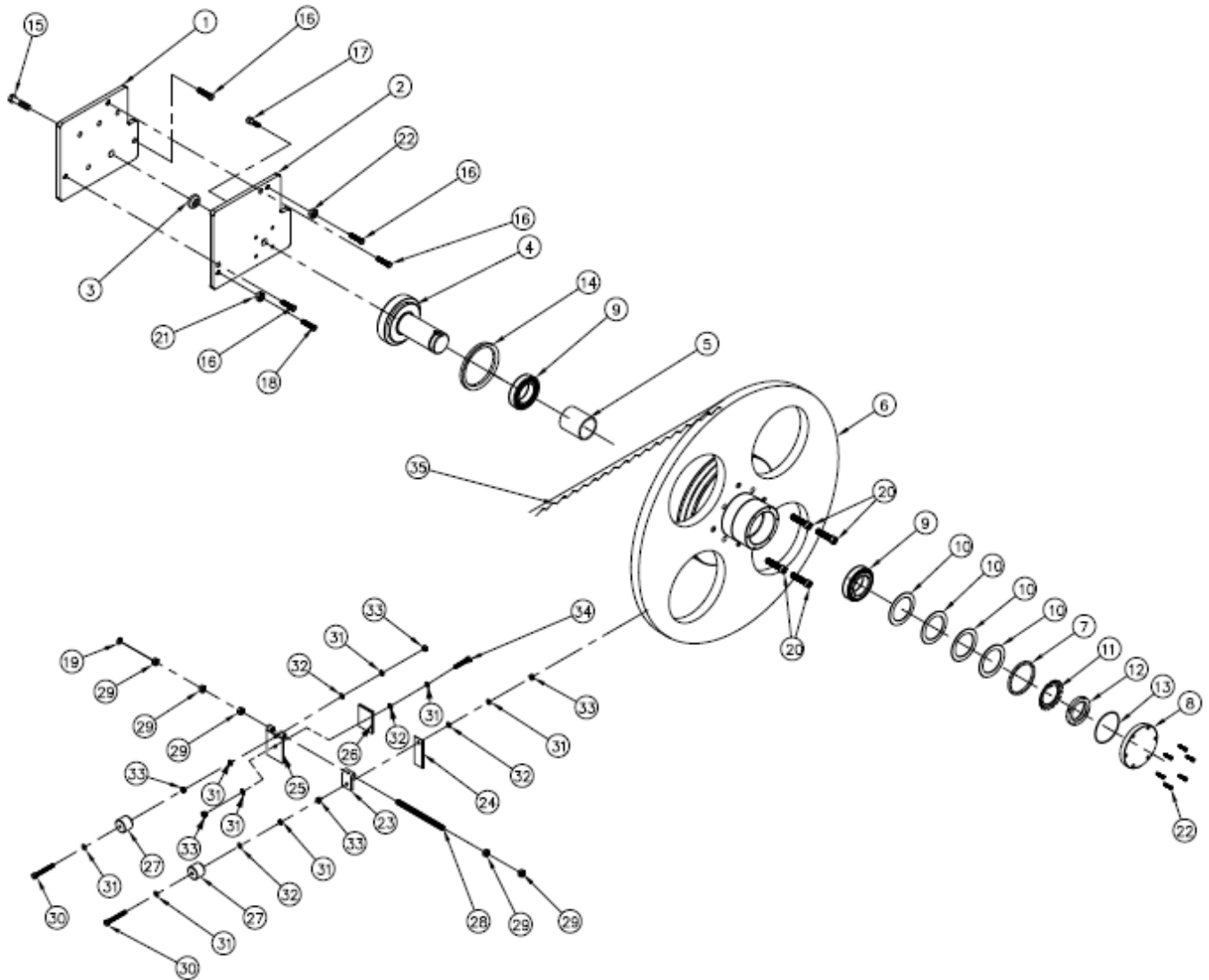


Ref	DESCRIPTION	PART #	QTY
1	Motor Base Plate	116349	1
2	Motor Mount Bracket	116337	1

MOTOR ASSEMBLY

Ref	DESCRIPTION	PART #	QTY
3	6mm x 30mmØ, Spacer	116621	4
4	Motor Shaft Cover Plate	116326	1
5	Lubricant Bottle Mounting Frame	116324	1
6	Pulley- SPB112X2-1610, 60Hz	116099	1
	Pulley- SPB118X2-1610, 50Hz	116098	1
7	15kW Baldor Motor, IE1 (50Hz)	116462	2
	15kW Baldor Motor, IE3, Magnetic Brake (50Hz)	116622	2
	18kW Baldor Motor, IE3 (60Hz)	116623	2
8	Hex Nut, M14-8-B, FE/ZN5, PN/M82144	F81035-1	12
9	Carriage Bolt, M6x16-8.8, FE/ZN5, PN/M82406	F81001-36	4
10	Large Plain Washer 6.4, FE/ZN5	F81053-11	4
11	Nut, M6-8-B, Hex Nylon, FE/ZN5, PN/M82175	F81001-15	4
12	Hex Socket Screw, M12x100-8.8, FE/ZN5, PN/M82302	F81004-108	4
13	Spin Washer, 212.2, M12	F81056-2	8
14	Flat Washer 12, FE/ZN5, PN-78/M82005	F81056-1	4
15	Hex Head Bolt, M10x100-8.8, FE/ZN5, PN/M82105, Full Thread	F81003-91	2
16	Washer 10.2, Split Lock, FE/ZN5, PN/M82008	F81055-2	2
17	Flat Washer 10.5, FE/ZN5, PN/M82005	F81055-1	2
18	Hex Nut, M10-8-B, FE/ZN5, PN/M82144	F81033-3	2
19	V-Belt B50 (Pulley 112)	116553	2
	V-Belt B51 (Pulley 118)	116554	2

WHEEL ASSEMBLY (DRIVE SIDE)

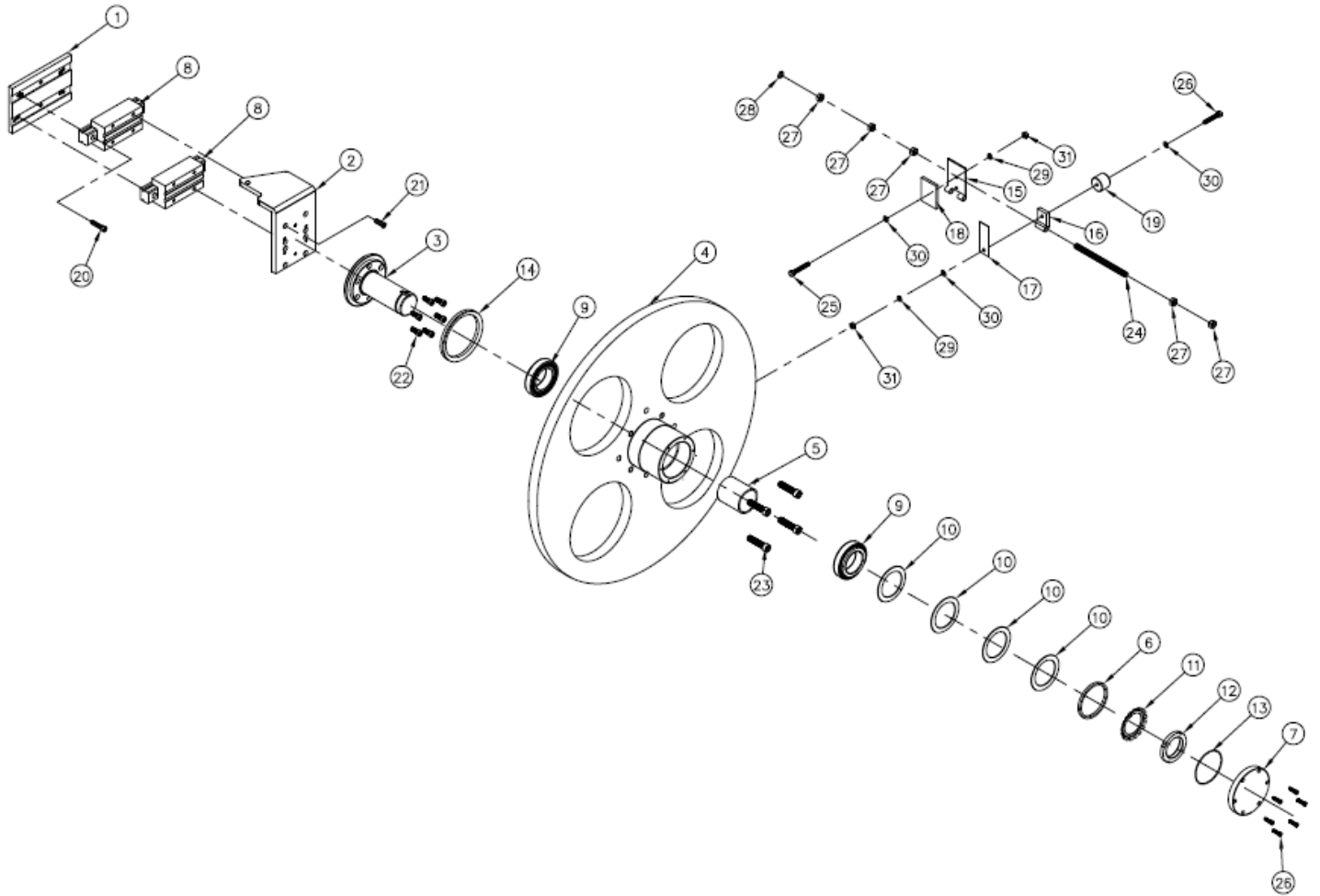


Ref	DESCRIPTION	PART #	QTY
1	Inner Tracking Mount Plate	116347	1
2	Outer Tracking Mount Plate	116348	1
3	Wheel Alignment Pivot	116624	1
4	Drive Wheel Shaft	116266	1
5	Sleeve- 69mm x 62mmø	116141	1
6	28mm, Drive Wheel Assembly	116558	1
	44mm, Drive Wheel Assembly	116460	1

WHEEL ASSEMBLY (DRIVE SIDE)

Ref	DESCRIPTION	PART #	QTY
7	11mm, Spacer	116125	1
8	Wheel Hub End Cap	116375	1
9	4T-32011X- Bearing	116095	2
10	89mmø, Spring Washer	116275	4
11	Bearing Retainer, Lock Washer	116269	1
12	Bearing Retainer, Nut	116270	1
13	Wheel End Cap Seal Ring	116295	1
14	Wheel Shaft Rubber Seal	116293	1
15	Hex Head Nachire Bolt 3 2/1	116616	1
16	Hex Head Bolt, M16x30-8.8, FE/ZN5, PN/M82105, Full Thread	F81006-36	4
17	Hex Socket Screw, M10x25-8.8, FE/ZN5, PN/M82302	F81003-32	1
18	Hex Head Bolt, M12x40-8.8, FE/ZN5, PN/M82105, Full Thread	F81004-4	2
19	Spin Washer, 212.2, M12	F81056-2	1
20	Hex Socket Screw, M12x75-8.8, FE/ZN5, PN/M82302	F81004-111	4
21	Hex Nut, M12-8-B, FE/ZN5, PN/M82144	F81034-1	1
22	Hex Nut, M12-8-B, FE/ZN5, PN/M82144	F81034-1	1
23	Bracket	116212	1
24	91mm x 33mm, Scraper Plate	116245	1
25	Steel Hinge Mount	116374	1
26	Wheel Oiling/ Cleaning Pad	116303	1
27	30mm x 38mmø, Spacer	116165	1
28	Threaded Rod, M12x 245-8.8, FE/ZN5, DIN975	F81004-97	1
29	Hex Nut, M12-8-B, FE/ZN5, PN/M82144	F81034-1	5
30	Hex Head Bolt, M8x45-8.8, FE/ZN5, PN/M82105, Full Thread	F81002-14	1
31	Large Plain Washer, 8x30x3, FE/ZN5	534284	2
32	Washer 8.2, Split Lock, FE/ZN5, PN/M82008	F81054-4	2
33	Hex Nut, M8-8-B, FE/ZN5, PN/M82144	F81032-1	2
34	Hex Head Bolt, M8x20-8.8, FE/ZN5, PN/M82105, Full Thread	F81002-4	6

WHEEL ASSEMBLY (IDLE SIDE)

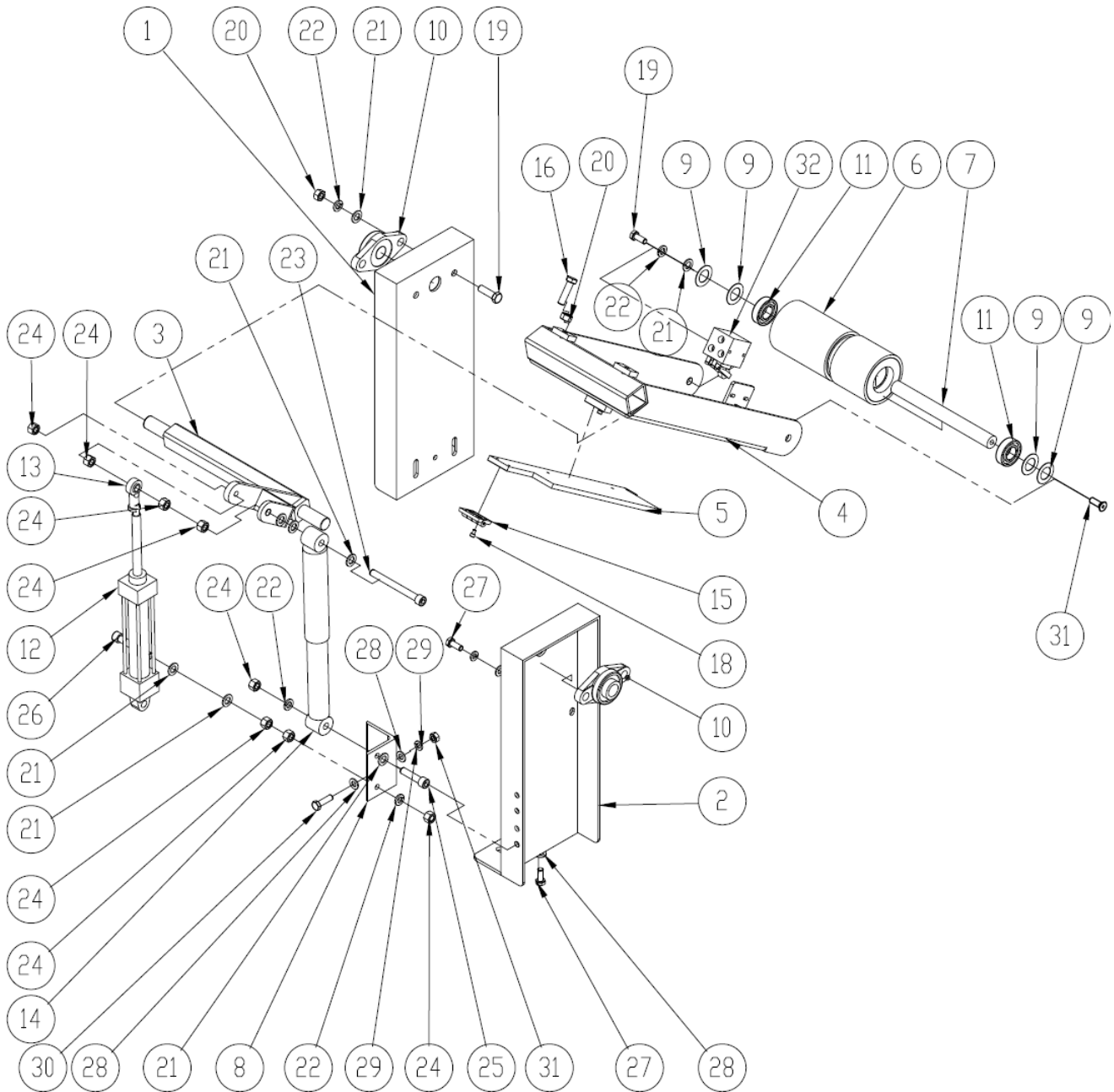


Ref	DESCRIPTION	PART #	QTY
1	Linear Bearing Mount Plate	116138	1
2	Tension Mount Bracket	116346	1
3	Idle Wheel Shaft	116240	1
4	28mm Idle Wheel Assembly	116461	1
	44mm Idle Wheel Assembly	116460	1
5	69mm x 62mmø, Sleeve	116141	1
6	11mm, Spacer	116125	1

WHEEL ASSEMBLY (IDLE SIDE)

Ref	DESCRIPTION	PART #	QTY
7	Wheel Hub End Cap	116375	1
8	PMI-MSA35, Linear Guideway Bearing	116105	2
9	4T-32011X- Bearing	116095	2
10	89mmø, Spring Washer	116275	4
11	Bearing Retainer, Lock Washer	116269	1
12	Bearing Retainer, Nut	116270	1
13	Wheel End Cap Seal Ring	116295	1
14	Wheel Shaft Rubber Seal	116293	1
15	Steel Hinge Mount	116374	1
16	Bracket	116212	1
17	91mm x 33mm, Scraper Plate	116245	1
18	Wheel Oiling/ Cleaning Pad	116303	1
19	30mm x 38mmø, Spacer	116165	1
20	Hex Socket Screw, M8x30-8.8, FE/ZN5, PN/M82302	F81002-21	4
21	Hex Socket Screw, M8x20-8.8, FE/ZN5, PN/M82302	F81002-30	4
22	Hex Socket Screw, M8x16-8.8, FE/ZN5, PN/M82302	F81002-39	6
23	Hex Socket Screw, M12x75-8.8, FE/ZN5, PN/M82302	F81004-111	4
24	Threaded Rod, M12x 245-8.8, FE/ZN5, DIN975	F81004-97	1
25	Hex Head Bolt, M8x20-8.8, FE/ZN5, PN/M82105, Full Thread	F81002-4	6
26	Hex Head Bolt, M8x45-8.8, FE/ZN5, PN/M82105, Full Thread	F81002-14	1
27	Hex Nut, M12-8-B, FE/ZN5, PN/M82144	F81034-1	5
28	Spin Washer, 212.2, M12	F81056-2	1
29	Washer 8.2, Split Lock, FE/ZN5, PN/M82008	F81054-4	2
30	Large Plain Washer, 8x30x3, FE/ZN5	534284	2
31	Hex Nut, M8-8-B, FE/ZN5, PN/M82144	F81032-1	2

INFEED HOLD DOWN ROLLER

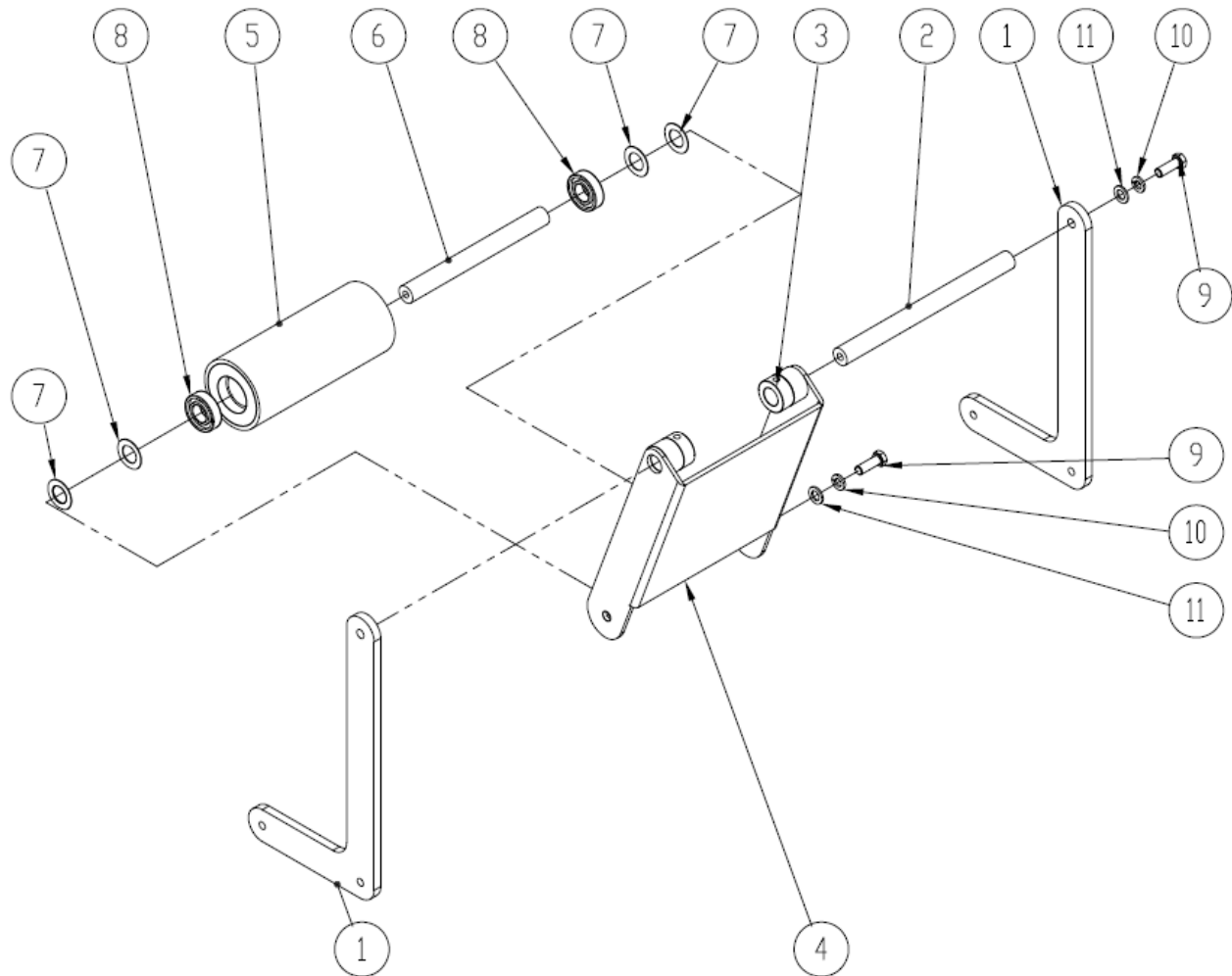


Ref	DESCRIPTION	PART #	QTY
1	Infeed Hold down/ Mounting Bracket	116355	1
2	Infeed Hold down/ Mounting Bracket	116354	1
3	Shaft, Mounting Bracket	116356	1
	Shaft, Mounting Bracket (Wide)	116628	1
4	Hold down roller mounting bracket	116357	1
	Hold down roller mounting bracket (Wide)	116629	1
5	Pressure Sensor Plate	116358	1
	Pressure Sensor Plate (Wide)	116630	1

INFEED HOLD DOWN ROLLER

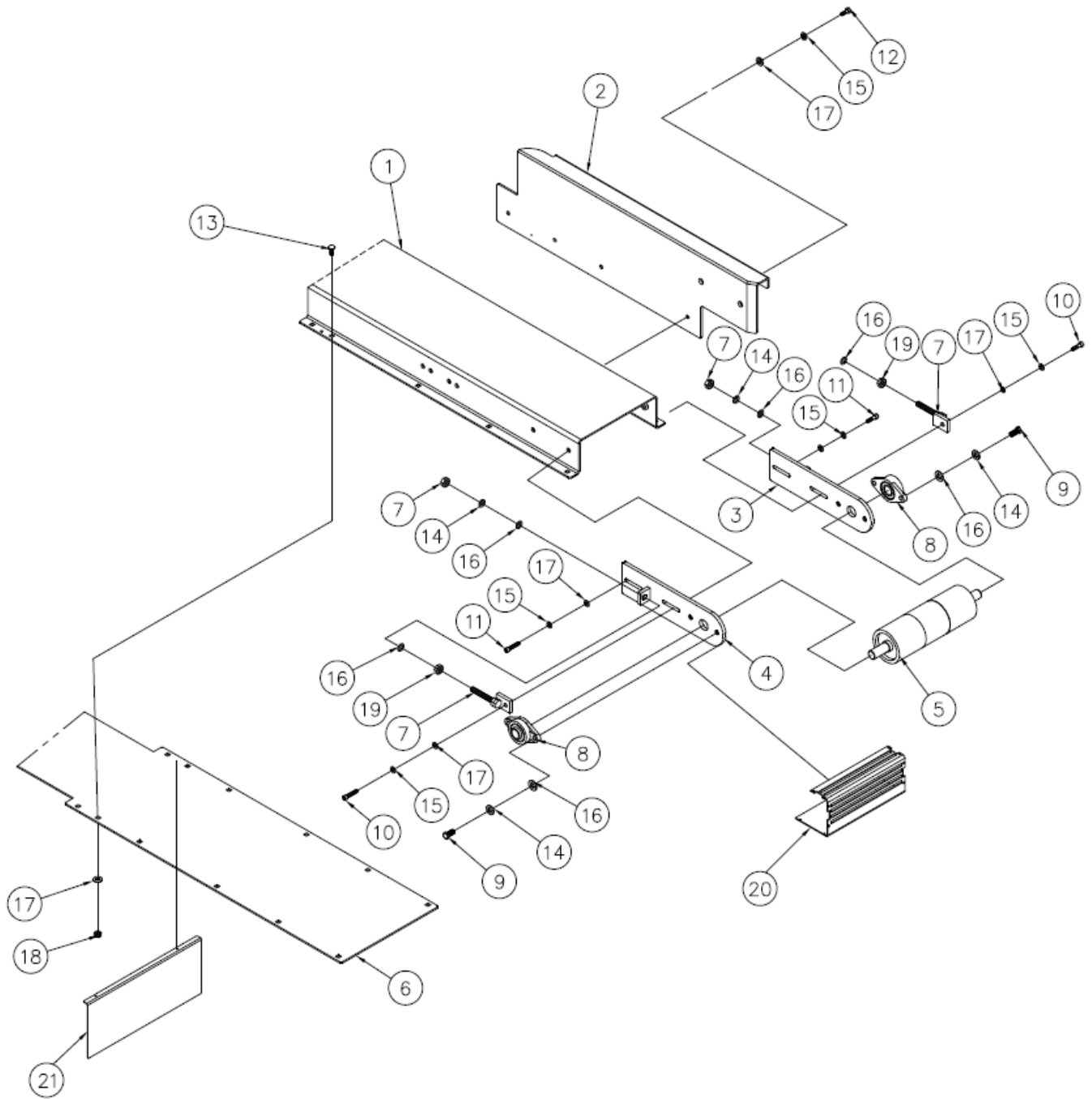
Ref	DESCRIPTION	PART #	QTY
6	Infeed Hold Down Roller	116123	1
	Infeed Hold Down Roller (Wide)	116625	1
7	Infeed Hold Down Roller Connecting Rod	116480	1
8	Mounting Bracket	116239	1
9	Flat Washer 21, FE/ZN5, PN/M82005	F81035-2	4
10	UCFL205- Bearing	116097	2
11	6205-2RS- Bearing	116090	2
12	MACP300-8A, Pneumatic Cylinder	116627	1
14	Shock Absorber	116626	1
15	Hinge	116273	1
16	Hex Head Bolt, M12x40-8.8, FE/ZN5, PN/M82105, Full Thread	F81004-4	2
18	Pan Head Cross Screw, M4x12-8.8, FE/ZN5, PN/M82202	F81011-43	4
19	Hex Head Bolt, M12x30-8.8, FE/ZN5, PN/M82105, Full Thread	F81004-22	4
20	Hex Nut, M12-8-B, FE/ZN5, PN/M82144	F81034-1	2
21	Flat Washer 13, FE/ZN5, PN/M82005	F81056-1	6
22	Spin Washer, 212.2, M12	F81056-2	4
23	Hex Socket Screw, M12x130-8.8, FE/ZN5, PN/M82302, Full Thread	F81004-112	1
24	Hex Nut, M12-8-B, FE/ZN5, PN/M82144	F81035-1	6
25	Hex Socket Screw, M12x60-8.8, FE/ZN5, PN/M82302	F81004-106	1
26	Hex Socket Screw, M12x80-8.8, FE/ZN5, PN/M82302	F81004-46	1
27	Carriage Bolt, M10x40-8.8, FE/ZN5, PN/M82406	F81003-40	4
28	Flat Washer 10.5, FE/ZN5, PN/M82005	F81055-1	6
29	Flat Washer 10.5, FE/ZN5, PN/M82005	F81055-1	6
30	Hex Head Bolt, M10x25-8.8, FE/ZN5, PN/M82105	F81003-31	2
31	Hex Nut, M10-8-B, FE/ZN5, PN/M82144	F81033-3	2
32	R-4-1/4, EA-D6979, Mechanical Valve	116067	1

OUTFEED HOLD DOWN ROLLER



Ref	DESCRIPTION	PART #	QTY
1	Outfeed Hold Down/ Mounting Frame	116403	2
2	Shaft, Connecting Rod	116163	1
4	Hold down Mounting Bracket	116359	1
	Hold down Mounting Bracket (Wide)	116631	1
5	Outfeed Hold Down Roller	116122	1
	Outfeed Hold Down Roller (Wide)	116632	1
6	Idle Roller Connecting Shaft	116145	1
	Idle Roller Connecting Shaft (Wide)	116633	1
7	Flat Washer 21, FE/ZN5, PN/M82005	F81035-2	4
8	6205-2RS- Bearing	116090	2
9	Hex Head Bolt, M12x30-8.8, FE/ZN5, PN/M82105, Full Thread	F81004-22	2
10	Spin Washer, 212.2, M12	F81056-2	4

FEED CONVEYOR (INFEED SECTION)



Ref	DESCRIPTION	PART #	QTY
1	Conveyor Bed Assembly	116401	1
	Conveyor Bed Assembly (Wide)	116402	1
2	Infeed Side Support	116338	1
3	Idle Roller Mounting Bracket	116341	2
	Idle Roller Mounting Bracket (CE version)	116634	2
4	Idle Conveyor Roller Mounting Bracket	11631	2
	Idle Conveyor Roller Mounting Bracket (CE Version)	116601	2
5	Idle Feed Roller	116121	1

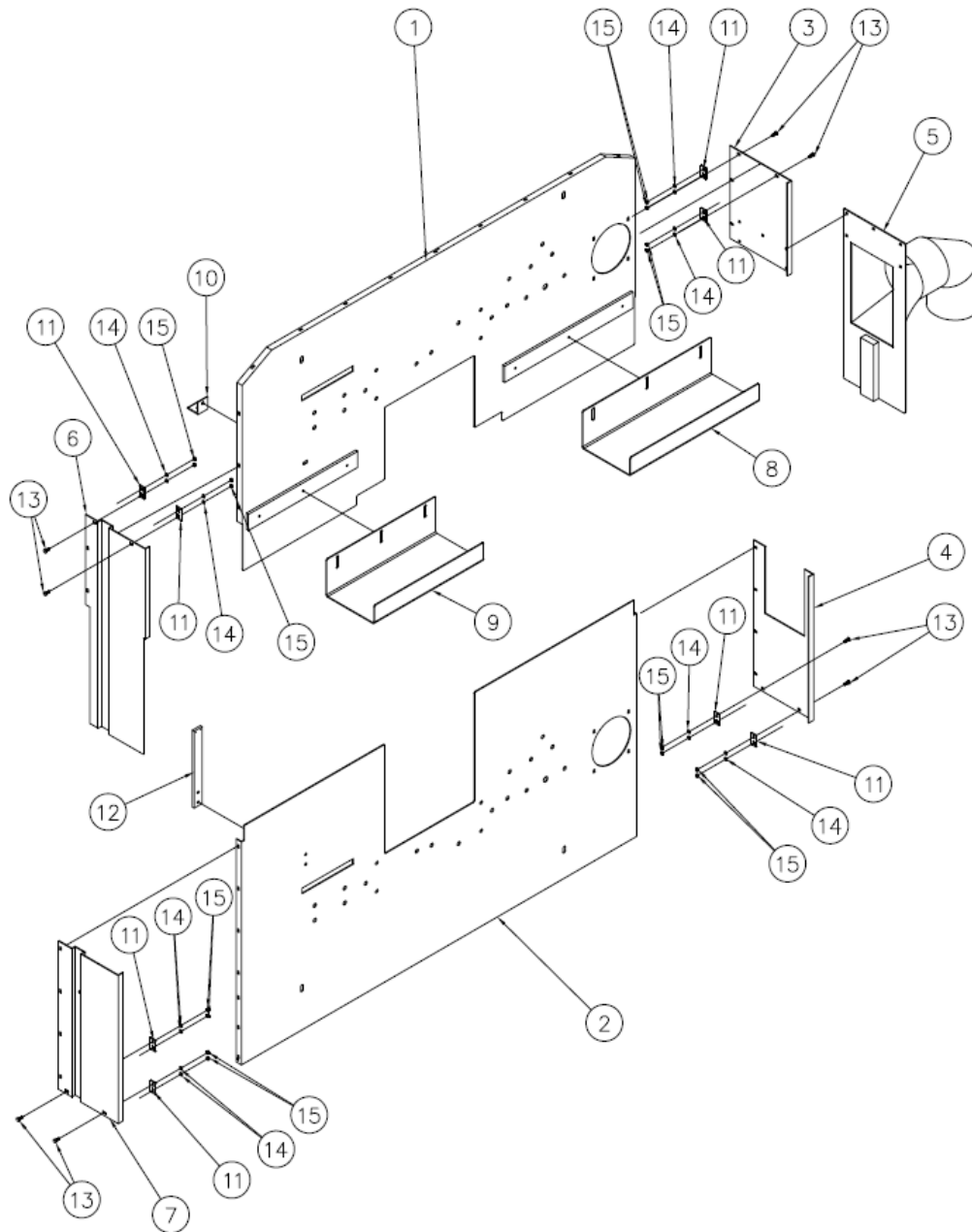
FEED CONVEYOR (INFEED SECTION)

Ref	DESCRIPTION	PART #	QTY
	Idle Feed Roller (Wide)	116600	1
6	Conveyor Assembly Base Plate	116598	1
	Conveyor Assembly Base Plate (Wide)	116599	1
7	Feed Belt tension Bracket	116233	2
8	UCFL205- Bearing	116097	2
9	Hex Head Bolt, M12x25-8.8, FE/ZN5, PN/M82105, Full Thread	F81004-31	4
10	Hex Socket Screw, M10x35-8.8, FE/ZN5, PN/M82302	F81003-56	2
11	Hex Socket Screw, M10x30-8.8, FE/ZN5, PN/M82302	F81003-110	2
12	Hex Head Bolt, M12x25-8.8, FE/ZN5, PN/M82105, Full Thread	F81004-31	4
13	Carriage Bolt, M10x25, FE/ZN5, PN/M82406	F81003-59	8
14	Spin Washer, 212.2, M12	F81056-2	4
15	Washer 10.2, Split Lock, FE/ZN5, PN/M82008	F81055-2	4
16	Flat Washer 13, FE/ZN5, PN/M82005	F81056-1	6
17	Flat Washer 10.5, FE/ZN5, PN/M82005	F81055-1	6
18	Nut, M10-8-B, Nylon Hex, FE/ZN5, PN/M82175	F81033-1	8
19	Hex Nut, M12-8-B, FE/ZN5, PN/M82144	F81034-1	4
20	Conveyor Guard (CE Version)	116635	1
	Conveyor Guard (CE Version)- Wide	116455	1
21	Blade Guard (CE Version)	116636	1
	Blade Guard (CE Version)- Wide	116454	1

FEED CONVEYOR (OUTFEED SECTION)

Ref	DESCRIPTION	PART #	QTY
5	6mm x 30mmø, Spacer	116621	1
7	285 x 5460, Conveyor Belt	116586	1
	385 x 5460, Conveyor Belt (Wide)	116106	1
8	Feed Motor, IE1, 1.5kW, 50/60Hz	116638	1
	Feed Motor, IE2, 1.5kW, 50/60Hz	116639	1
9	UCFL205- Bearing	116097	2
10	Hex Head Bolt, M12x25-8.8, FE/ZN5, PN/M82105, Full Thread	F81004-31	4
11	Hex Socket Screw, M10x30-8.8, FE/ZN5, PN/M82302	F81003-110	6
12	Hex Socket Screw, M10x20-8.8, FE/ZN5, PN/M82302	F81003-108	1
14	Countersunk Flat Head Screw, M8x20-8.8, FE/ZN5, DIN965A	F81002-87	4
15	Washer 10.2, Split Lock, FE/ZN5, PN/M82008	F81055-2	4
16	Flat Washer 10.5, FE/ZN5, PN/M82005	F81055-1	6
17	Spin Washer, 212.2, M12	F81056-2	4
18	Flat Washer 13, FE/ZN5, PN/M82005	F81056-1	6
19	Conveyor Guard (CE Version)	116637	1
	Conveyor Guard (CE Version)- Wide	116455	1

COVER ASSEMBLY (BACK AND SIDES)

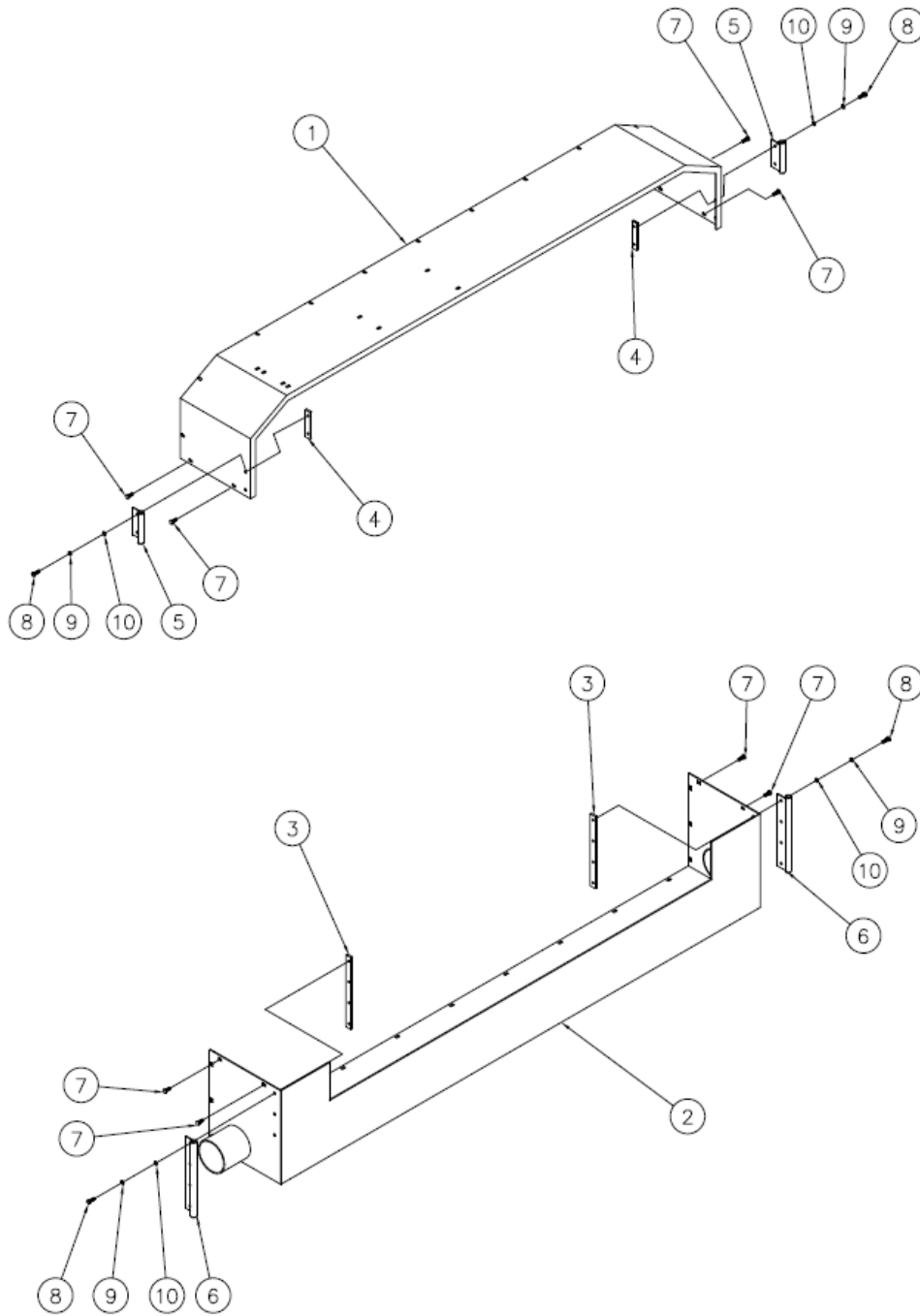


Ref	DESCRIPTION	PART #	QTY
1	Back Cover Plate, Top	116385	1
	Back Cover Plate, Top (Wide)	116386	1
2	Back Cover Plate, Bottom	116387	1
	Back Cover Plate, Bottom (Wide)	116388	1
3	Right Upper Cover	116391	1
4	Right Lower Cover	116392	1
5	Dust Extraction Chute	116393	1

COVER ASSEMBLY (BACK AND SIDES)

Ref	DESCRIPTION	PART #	QTY
6	Left Upper Cover	116389	1
7	Left Lower Cover	116390	1
8	Right Saw Dust Chute	116640	1
	Right Saw Dust Chute (Wide)	116641	1
9	Left Saw Dust Chute	116642	1
	Left Saw Dust Chute (Wide)	116643	1
10	L-Shaped Bracket	116258	2
11	Mounting Plate	116644	8
12	Guide Plate	116223	1
13	Carriage Bolt, M6x16-8.8, FE/ZN5, PN/M82406	F81001-36	8
14	Large Plain Washer 6.4, FE/ZN5, PN/M82030	F81053-11	16
15	Nut, M6-8-B, Hex Nylon, FE/ZN5, PN/M82175	F81001-15	16

COVER ASSEMBLY (TOP AND BOTTOM)

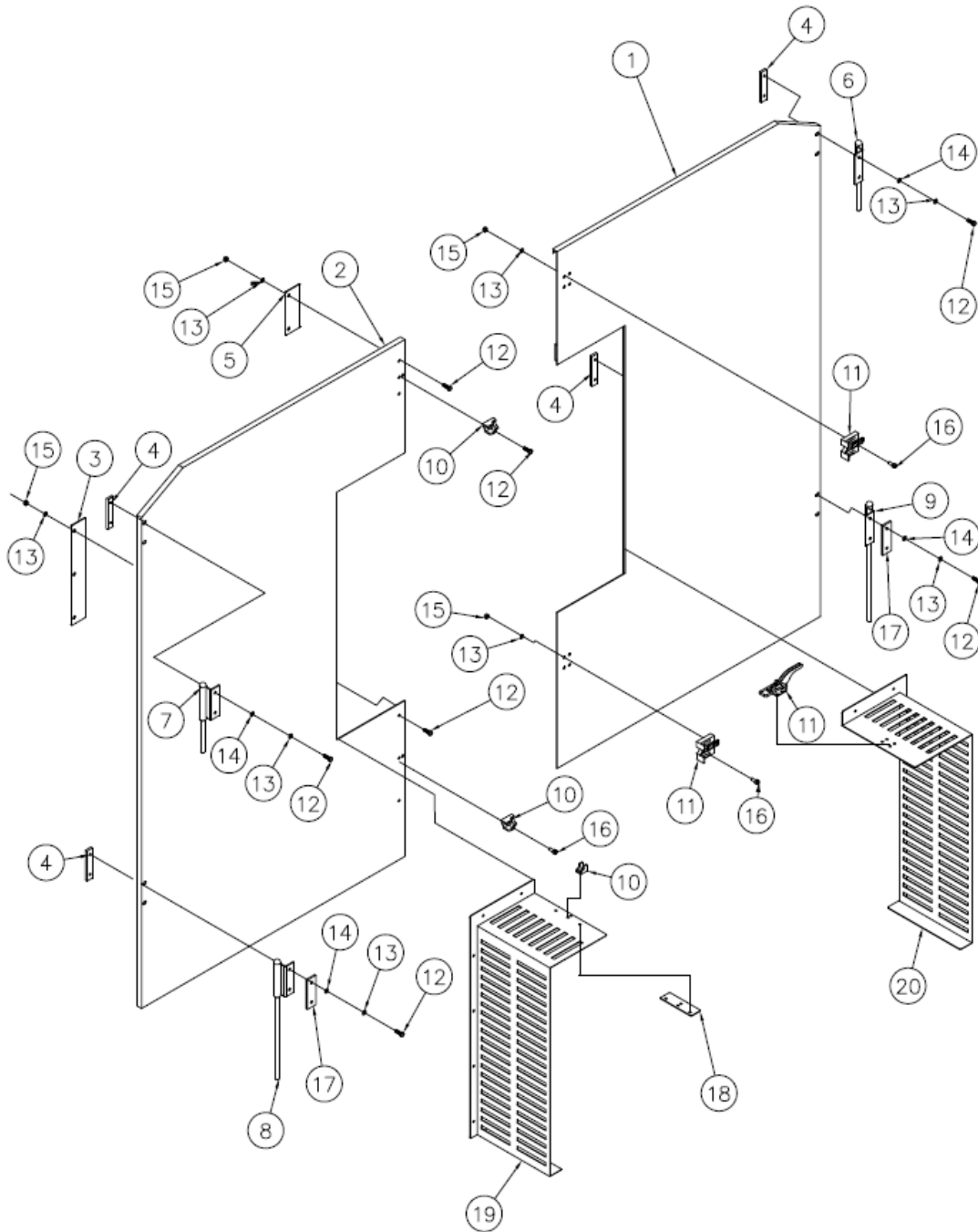


Ref	DESCRIPTION	PART #	QTY
1	Top Cover	116605	1
	Top Cover (Wide)	116606	1
2	Bottom Cover	116394	1
	Bottom Cover (Wide)	116395	1
3	245mm x 6mm, Door Hinge Mounting Plate	116265	2
4	90mm x 6mm, Door Hinge Mounting Plate	116263	2
5	Door Hinge Top	116405	2

COVER ASSEMBLY (TOP AND BOTTOM)

Ref	DESCRIPTION	PART #	QTY
6	Door Hinge Bottom	116407	2
7	Carriage Bolt, M6x16-8.8, FE/ZN5, PN/M82406	F81001-36	8
8	Hex Head Bolt, M6x20, FE/ZN5, PN/M82105, Full Thread	F81001-2	12
9	Washer 6.1, Split Lock, FE/ZN5, PN/M82008	F81053-3	12
10	Large Plain Washer 6.4, FE/ZN5, PN/M82030	F81053-11	12

DOOR COVER ASSEMBLY

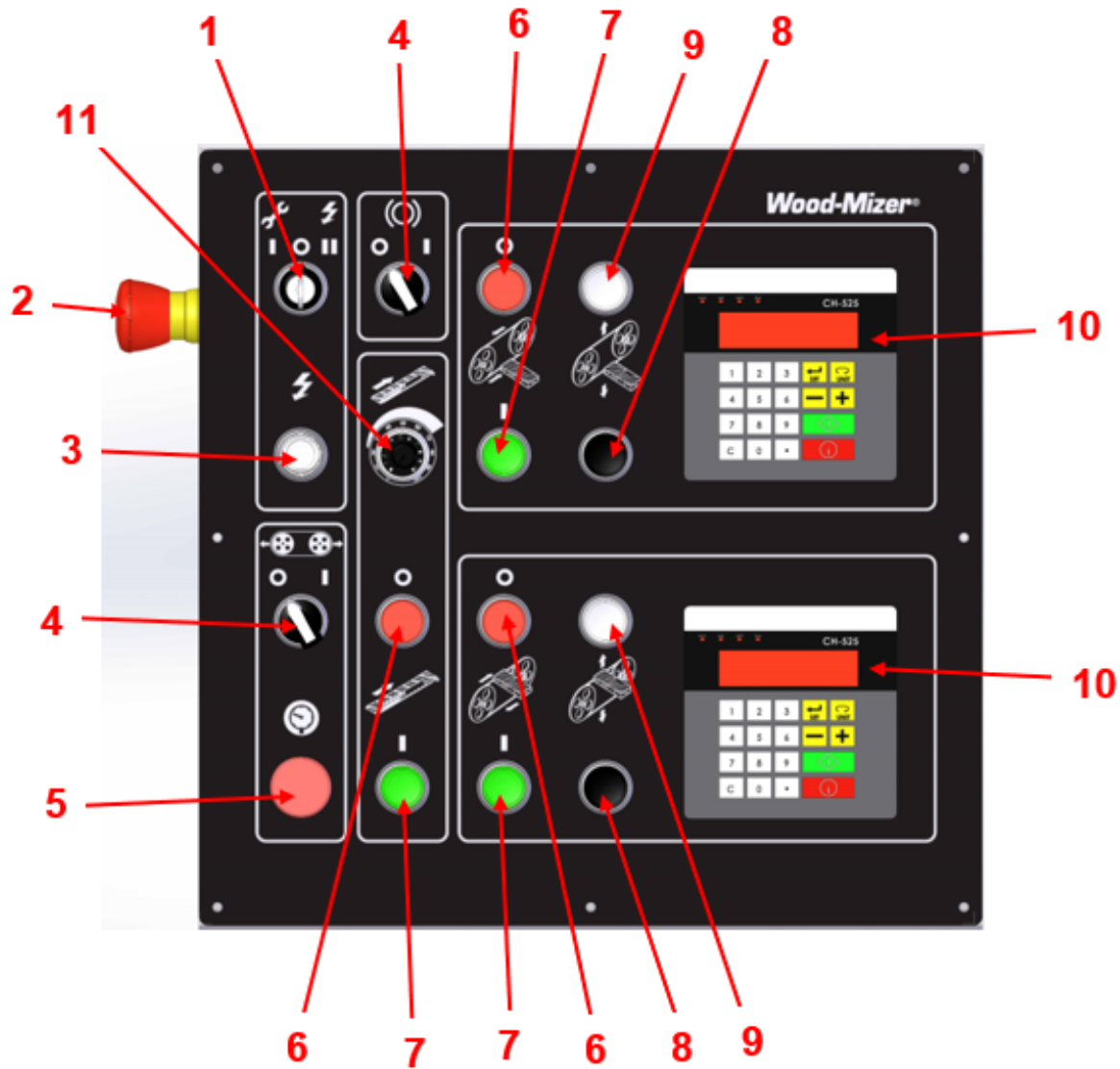


Ref	DESCRIPTION	PART #	QTY
1	Right Door	116396	1
	Right Door (Wide)	116397	1
2	Left Door	116398	1
	Left Door (Wide)	116399	1
3	Door Frame Mount	116345	2
4	90mm x 6mm, Door Hinge Mounting Plate	116263	2

DOOR COVER ASSEMBLY

Ref	DESCRIPTION	PART #	QTY
6	Top Door Hinge (Right)	116408	1
7	Top Door Hinge (Left)	116645	1
8	Bottom Door Hinge (Left)	116406	1
9	Bottom Door Hinge (Right)	116646	1
10	Door Latch Assembly	116271	3
11			
12	Hex Head Bolt, M6x16-8.8, FE/ZN5, PN/M82105, Full Thread	F81001-15	12
13	Large Plain Washer 6.4, FE/ZN5, PN/M82030	F81053-11	12
14			
15	Nut, M6-8-B, Hex Nylon, FE/ZN5, PN/M82175	F81001-15	12
16	Countersunk Flat Head Screw, M6x35-8.8, FE/ZN5, DIN965A	F81001-93	8
17	90mm x 6mm, Door Hinge Mounting Plate	116263	2
18	Upper Door Guard	116400	1
19	Left Infeed Guard (CE Version)	116607	1
	Left Infeed Guard (CE Version)- Wide	116457	1
20	Right Infeed Guard (CE Version)	116608	1
	Right Infeed Guard (CE Version)- Wide	116458	1

CONTROL PANEL



Ref	DESCRIPTION	PART #	QTY
1	Key Switch Assembly	116654	1
2	“PUSH” Emergency Stop, AB 800FP-MT44PX02	116655	1
3	Lighted Push Button, 800F-N5W	116656	1
4	Toggle Switch, 800F-X10	116657	2
5	Red LED, M22-LED230-R	116658	1
6	Red Push Button, AB 800FP-F4PX01	116659	3
7	Green Push Button, AB 800FP-LF3PN5GX10	116660	3
8	Black Push Button, AB 800FP -F5PX10	116661	2
9	White Push Button, AB 800FP -F6PX10	116662	2
10	CH-525, Setworks	116312	2
11	POT, MOELLER M22-R10K	116663	1